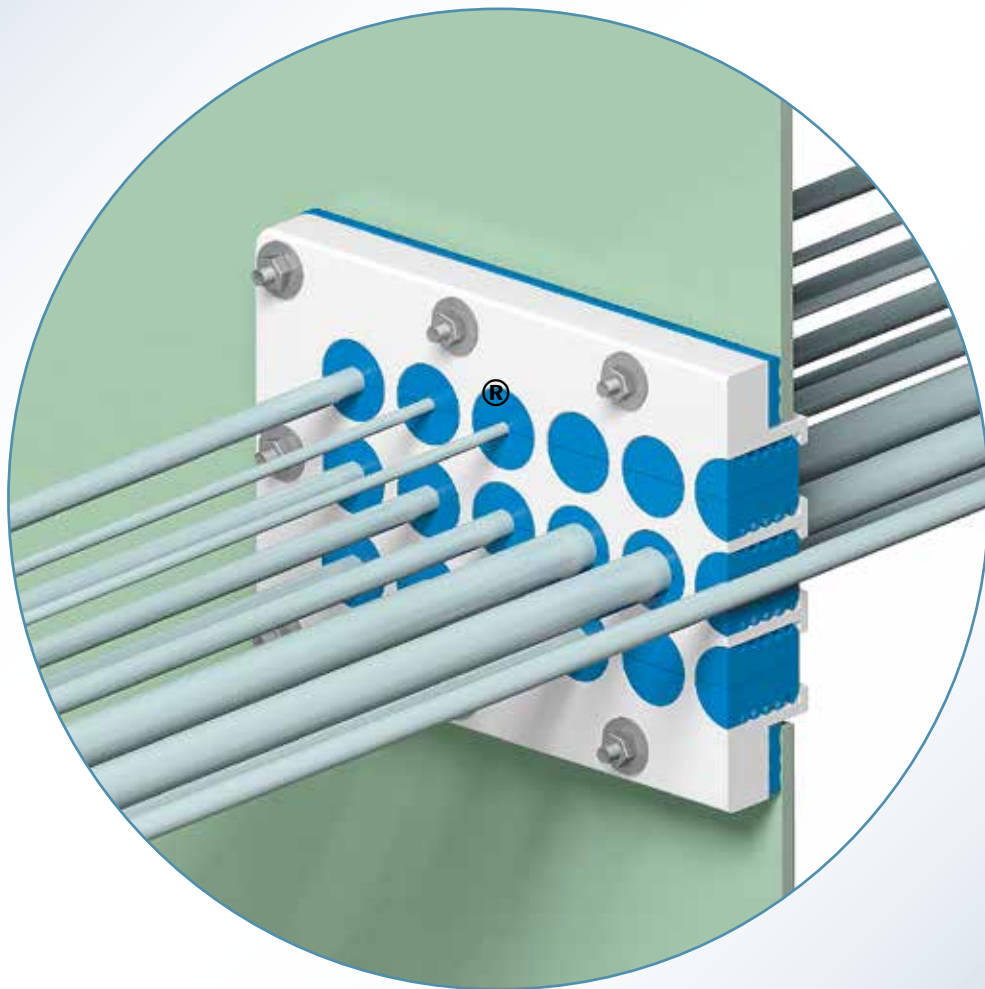




INSTALLATION INSTRUCTIONS CET-A-SIL[®] SEALING PLUGS IN GLANDMOD[®] MULTI-MODULES FOR CABLE GLAND SYSTEMS



CET-A-SIL[®]
GLANDMOD[®]



SEALING VALLEY

KNOWLEDGE TRANSFER, EDUCATION AND TRAINING

Beele campus 45.000 m²
Ready 2020/2021



- A: Reception, Education Center, Workshops, Video Conferences
- B: Demonstration, Training and Installation
- C: R&D center, Testing Facilities
- D: Pilot plant for new developments
- E: Production Plant phase 1 and 2
- F: Park with amphitheater and Food Forest 15.000 m²

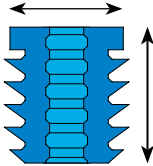
Copyright	: BEELE Engineering BV, Aalten, the Netherlands. Proprietary rights on all drawings and technical data released in this brochure. © 1997-2022
Edition	: January 2022
Note	: No part of this publication may be reproduced without explicit written approval of BEELE Engineering BV.
Research & Development	: BEELE Engineering BV, Aalten, the Netherlands.
Note	: The manufacturer reserves the right to make dimensional and design modifications without prior notification.
©	: ACTIFOAM, AQUASTOP, BEEBLOCK, BEELE, BEELE WE CARE, BEESEAL, CET-A-SIL, CONDUCTON, CONTROFIL, CRUSHER, CSD, DYNATITE, FIRAQUA, FIRSTO, FISSIC, FIWA, FYLLOFYS, FYLLOFOAM, GLANDMOD, LEAXEAL, NOFIRNO, RISE, SEALING VALLEY, S, SLIPSIL, Ranges SLIPSIL plugs are registered trade marks of BEELE Engineering.
brochure code	: installation CET-A-SIL/GLANDMOD

INSTALLATION INSTRUCTIONS CET-A-SIL® SEALING PLUGS IN GLANDMOD® MULTI-MODULES FOR CABLE GLAND SYSTEMS



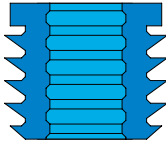
The GLANDMOD® multi-gland sealing system consists of a GLANDMOD® module made of HMPE, Aluminum or NOFIRNO® rubber, a NOFIRNO® gasket and CET-A-SIL® sealing plugs. The GLANDMOD® modules are available in various configurations. The CET-A-SIL® sealing plugs are available for cable diameters ranging from 4 to 60 mm. CET-A-SIL® blind plugs are used for blanking off passage holes not occupied with cables. Between the GLANDMOD® module and the construction a NOFIRNO® gasket is applied. No corrosion and a service life exceeding 20 years guarantee for long term functionality with regards to gas and water tightness.

INSTALLATION INSTRUCTIONS CET-A-SIL® SEALING PLUGS IN GLANDMOD® MULTI-MODULES FOR CABLE GLAND SYSTEMS



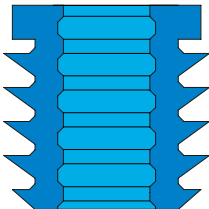
CET-A-SIL SERIES 15

Flange 15 mm length 18 mm	15/0	blind	46.0100
	15/4	3.8-4.3	46.0104
	15/4.5	4.3-4.8	46.0105
	15/5	4.8-5.3	46.0106
	15/5.5	5.3-5.8	46.0107
	15/6	5.8-6.3	46.0108
	15/6.5	6.3-6.8	46.0109
	15/7	6.8-7.3	46.0110



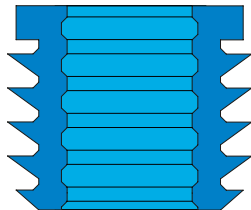
CET-A-SIL SERIES 20

Flange 20mm length 18 mm	20/0	blind	46.0200
	20/4	3.8-4.3	46.0204
	20/4.5	4.3-4.8	46.0205
	20/5	4.8-5.3	46.0206
	20/5.5	5.3-5.8	46.0207
	20/6	5.7-6.7	46.0208
	20/7	6.7-7.7	46.0209
	20/8	7.7-8.7	46.0210
	20/9	8.7-9.7	46.0211
	20/10	9.7-10.3	46.0212



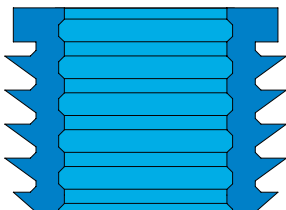
CET-A-SIL SERIES 25

Flange 25 mm length 27 mm	25/0	blind	46.0300
	25/8	7.7-8.7	46.0308
	25/9	8.7-9.7	46.0309
	25/10	9.7-10.7	46.0310
	25/11	10.7-11.7	46.0311
	25/12	11.7-12.7	46.0312
	25/13	12.7-13.7	46.0313
	25/14	13.7-14.3	46.0314



CET-A-SIL SERIES 30

Flange 30 mm length 27 mm	30/0	blind	46.0400
	30/10	9.7-10.7	46.0410
	30/11	10.7-11.7	46.0411
	30/12	11.7-12.7	46.0412
	30/13	12.7-13.7	46.0413
	30/14	13.7-14.7	46.0414
	30/15	14.7-15.7	46.0415
	30/16	15.7-16.7	46.0416
	30/17	16.7-17.3	46.0417

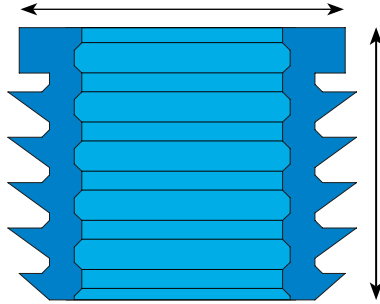


CET-A-SIL SERIES 35

Flange 35 mm length 27 mm	35/0	blind	46.0500
	35/15	14.7-15.7	46.0515
	35/16	15.7-16.7	46.0516
	35/17	16.7-17.7	46.0517
	35/18	17.7-18.7	46.0518
	35/19	18.7-19.7	46.0519
	35/20	19.7-20.7	46.0520
	35/21	20.7-21.7	46.0521
	35/22	21.7-22.3	46.0522

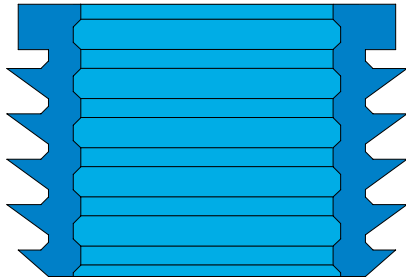
all dimensions in mm

INSTALLATION INSTRUCTIONS CET-A-SIL® SEALING PLUGS IN GLANDMOD® MULTI-MODULES FOR CABLE GLAND SYSTEMS



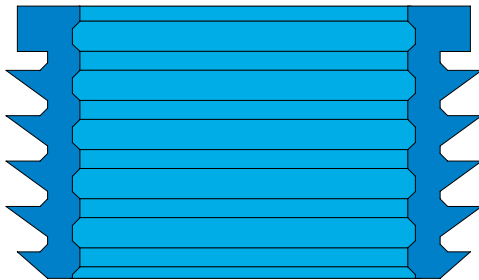
CET-A-SIL SERIES 43

	43/0	blind	46.0600
	43/20	19.7-20.7	46.0620
	43/21	20.7-21.7	46.0621
	43/22	21.7-22.7	46.0622
Flange 43 mm	43/23	22.7-23.7	46.0623
length 36 mm	43/24	23.7-24.7	46.0624
	43/25	24.7-25.7	46.0625
	43/26	25.7-26.7	46.0626
	43/27	26.7-27.7	46.0627
	43/28	27.7-28.7	46.0628
	43/29	28.7-29.3	46.0629



CET-A-SIL SERIES 50

	50/0	blind	46.0700
	50/25	24.7-25.7	46.0725
	50/26	25.7-26.7	46.0726
	50/27	26.7-27.7	46.0727
Flange 50 mm	50/28	27.7-28.7	46.0728
length 36 mm	50/29	28.7-29.7	46.0729
	50/30	29.7-30.7	46.0730
	50/31	30.7-31.7	46.0731
	50/32	31.7-32.7	46.0732
	50/33	32.7-33.7	46.0733
	50/34	33.7-34.3	46.0734



CET-A-SIL SERIES 60

	60/0	blind	46.0800
	60/29	28.7-29.7	46.0829
	60/30	29.7-30.7	46.0830
	60/31	30.7-31.7	46.0831
Flange 60 mm	60/32	31.7-32.7	46.0832
length 36 mm	60/33	32.7-33.7	46.0833
	60/34	33.7-34.7	46.0834
	60/35	34.7-35.7	46.0835
	60/36	35.7-36.7	46.0836
	60/37	36.7-37.7	46.0837
	60/38	37.7-38.7	46.0838
	60/39	38.7-39.7	46.0839
	60/40	39.7-40.3	46.0840

CET-A-SIL SERIES 80

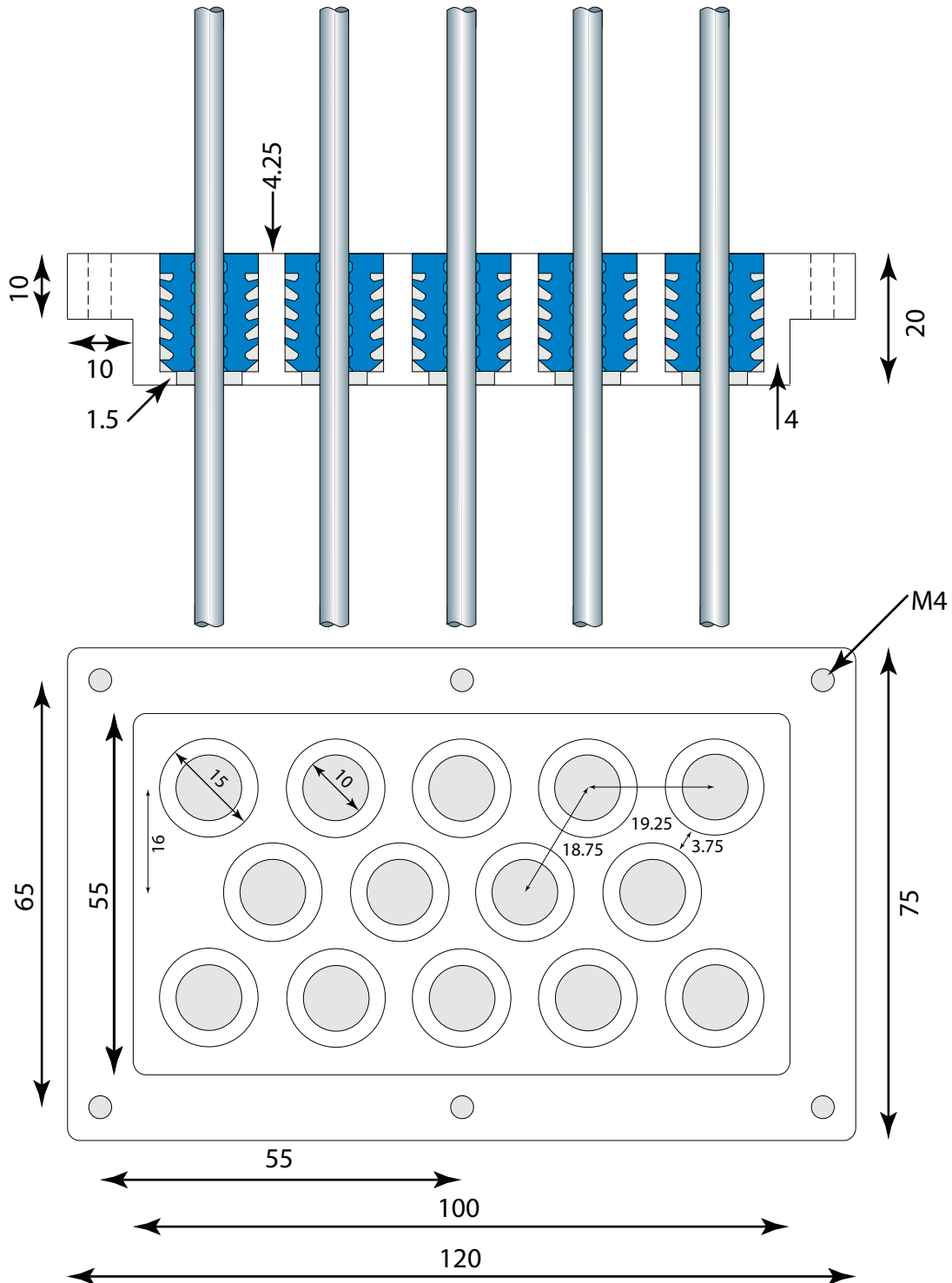
	80/0	blind	46.1000
	80/35	34.7-35.7	46.1035
	80/36	35.7-36.7	46.1036
	80/37	36.7-37.7	46.1037
	80/38	37.7-38.7	46.1038
Flange 80 mm	80/39	38.7-39.7	46.1039
length 45 mm	80/40	39.7-40.7	46.1040
	80/41	40.7-41.7	46.1041
	80/42	41.7-42.7	46.1042
	80/43	42.7-43.7	46.1043
	80/44	43.7-44.7	46.1044
	80/45	44.7-45.7	46.1045
	80/46	45.7-46.3	46.1046
	80/47	46.7-47.3	46.1047
	80/48	47.7-48.7	46.1048
	80/49	48.7-49.7	46.1049
	80/50	49.7-50.7	46.1050

80/51	50.7-51.7	46.1054	80/56	55.7-56.3	46.1056
80/52	51.7-52.7	46.1052	80/57	56.7-57.3	46.1057
80/53	52.7-53.7	46.1053	80/58	57.7-58.7	46.1058
80/54	53.7-54.7	46.1054	80/59	58.7-59.7	46.1059
80/55	54.7-55.7	46.1055	80/60	59.7-60.7	46.1060

all dimensions in mm

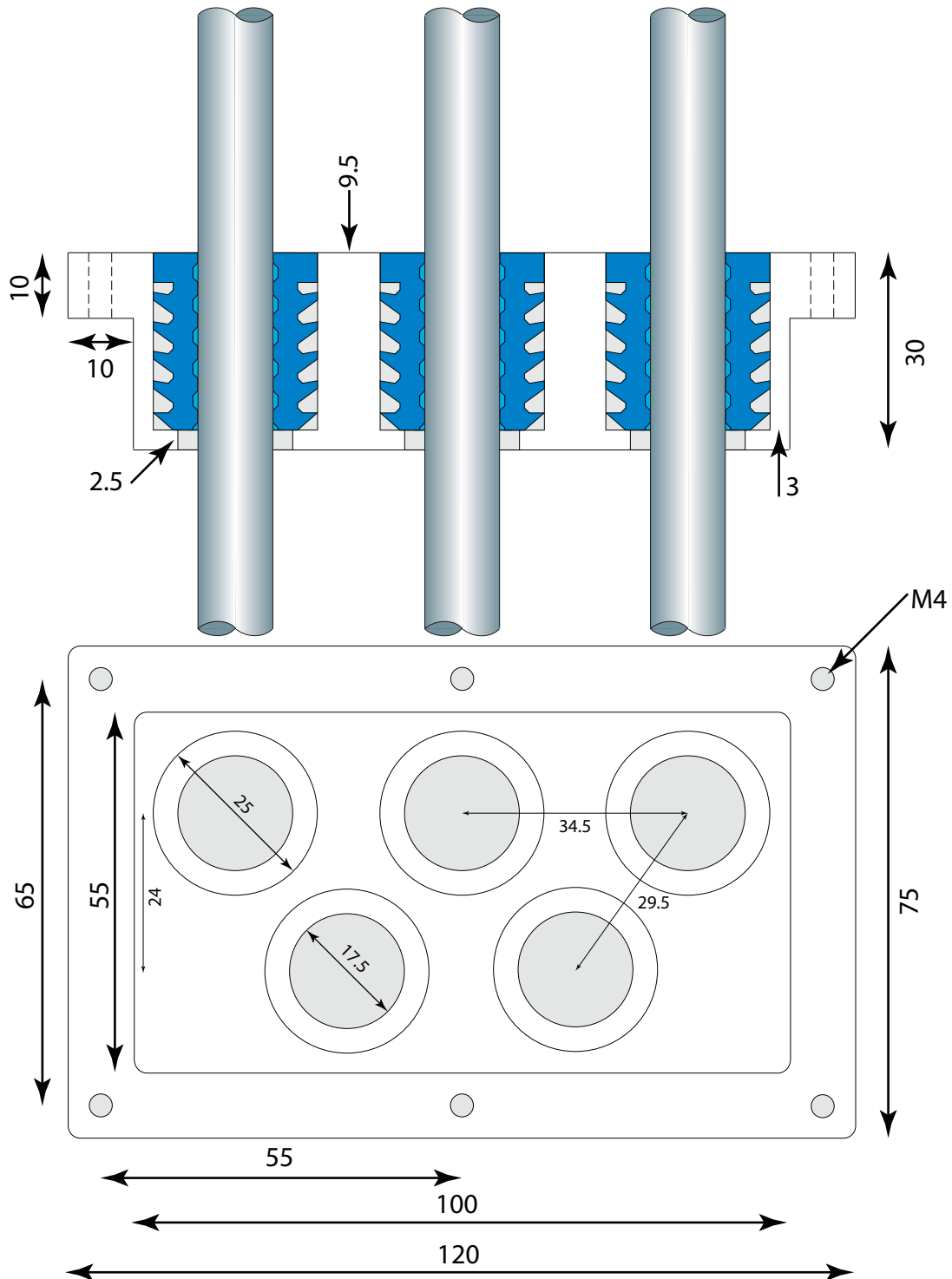
**INSTALLATION INSTRUCTIONS CET-A-SIL® SEALING PLUGS IN
GLANDMOD® MULTI-MODULES FOR CABLE GLAND SYSTEMS**

**GLANDMOD TYPE 14 x 15
CET-A-SIL PLUGS SERIES 15**



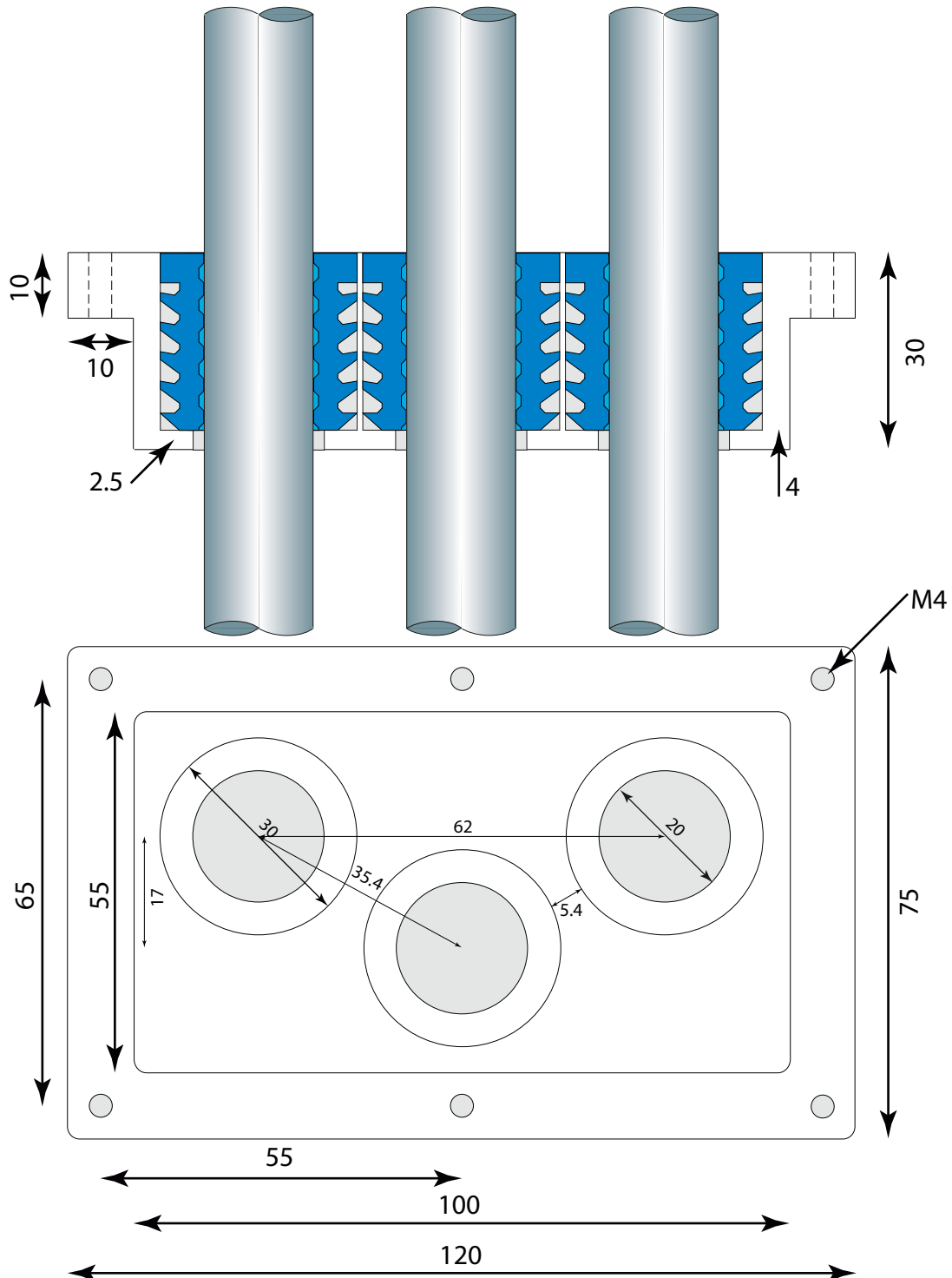
**INSTALLATION INSTRUCTIONS CET-A-SIL® SEALING PLUGS IN
GLANDMOD® MULTI-MODULES FOR CABLE GLAND SYSTEMS**

**GLANDMOD TYPE 5 x 25
CET-A-SIL PLUGS SERIES 25**

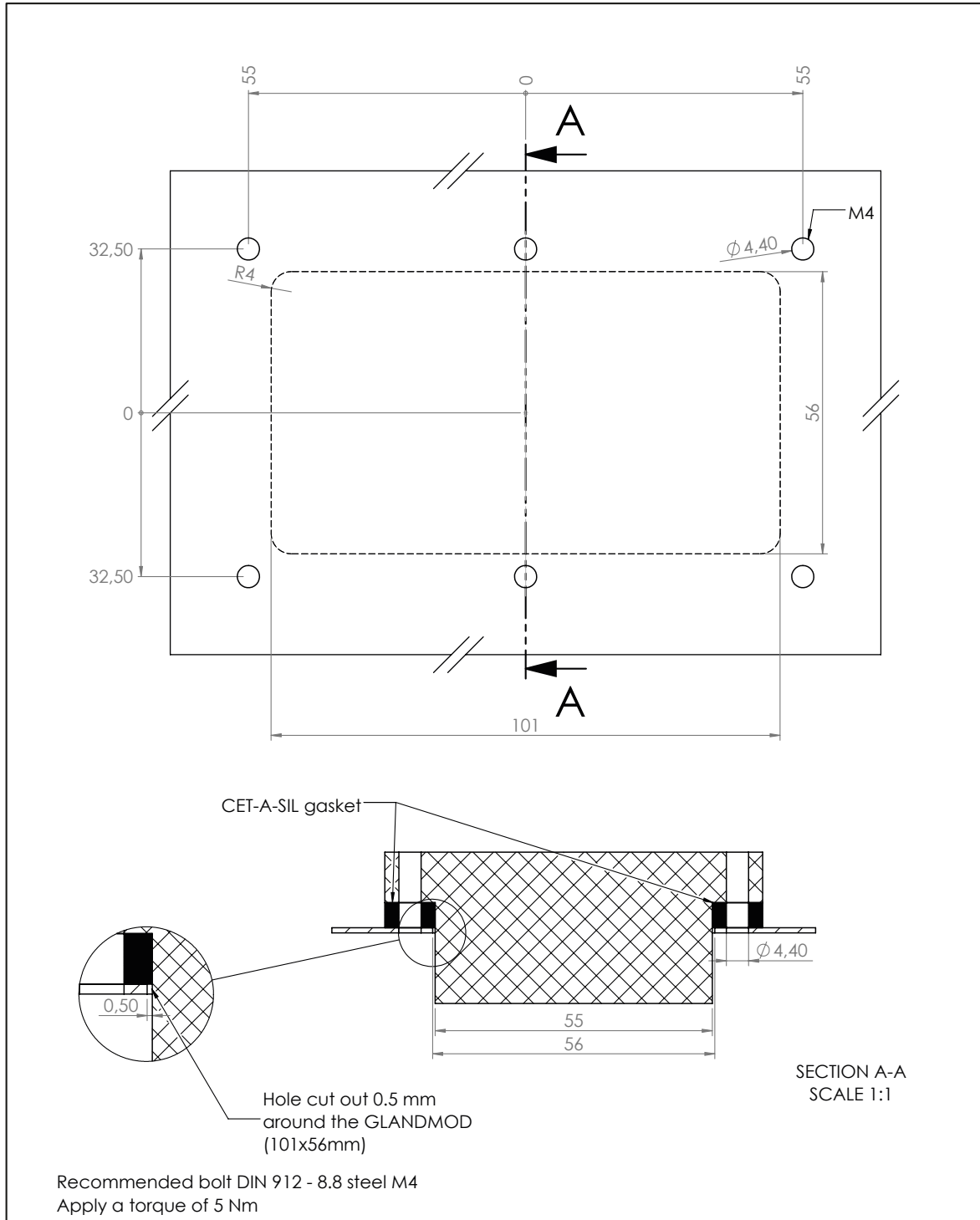


INSTALLATION INSTRUCTIONS CET-A-SIL® SEALING PLUGS IN GLANDMOD® MULTI-MODULES FOR CABLE GLAND SYSTEMS

GLANDMOD TYPE 3 x 30 CET-A-SIL PLUGS SERIES 30



INSTALLATION INSTRUCTIONS CET-A-SIL® SEALING PLUGS IN GLANDMOD® MULTI-MODULES FOR CABLE GLAND SYSTEMS



Description: GLANDMOD series 1 hole cut-out and bolt locations

Mat.: NFN rubber & HMPE plastic/aluminum

Ref.: AG

Date:

02-12-16

Scale: 1 : 1

No part of this document may be reproduced by photocopy, print, microfilm or any means without the written permission of BEELE Engineering bv of The Netherlands

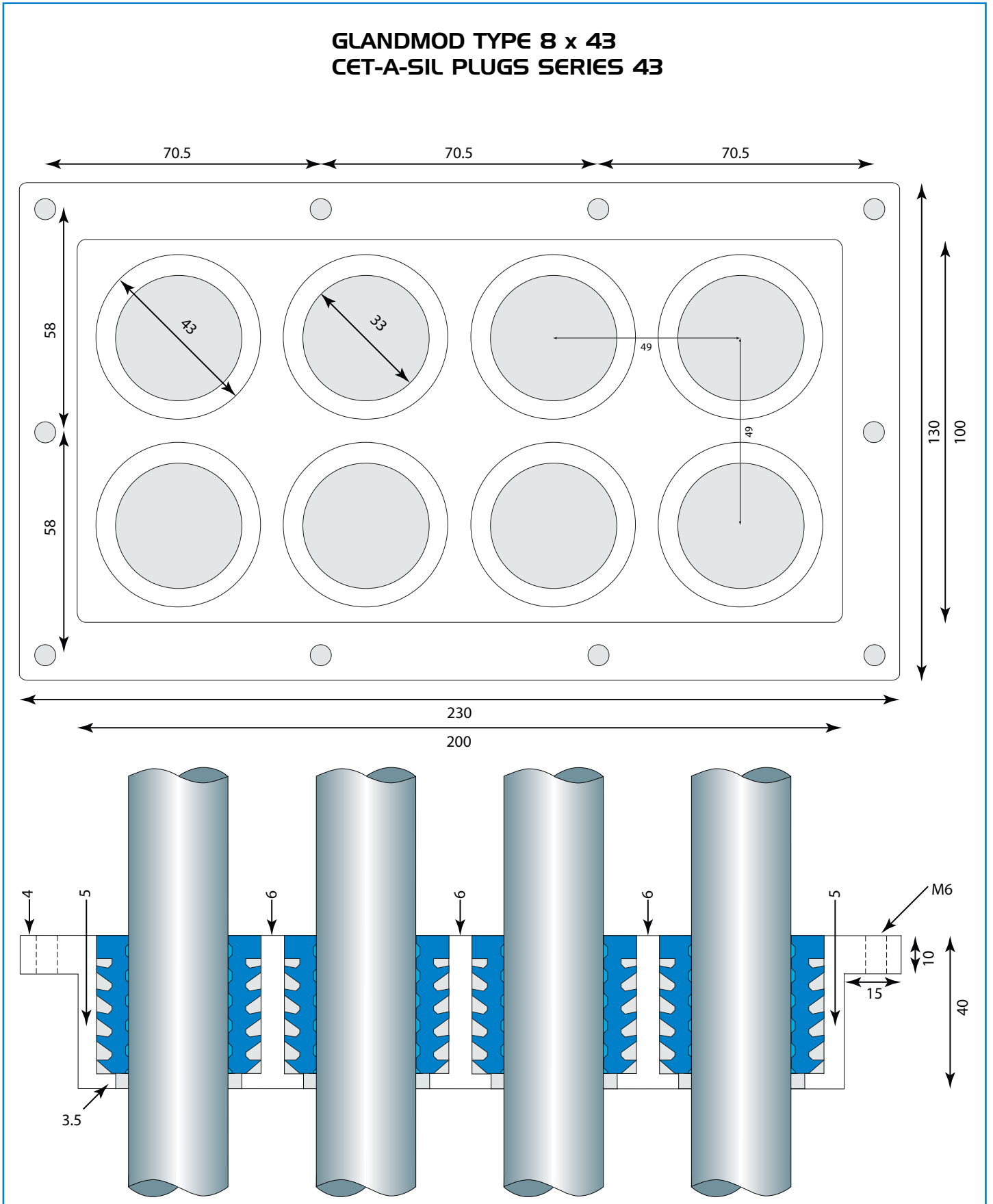
Rev. 1

Rev. 2

T 0925

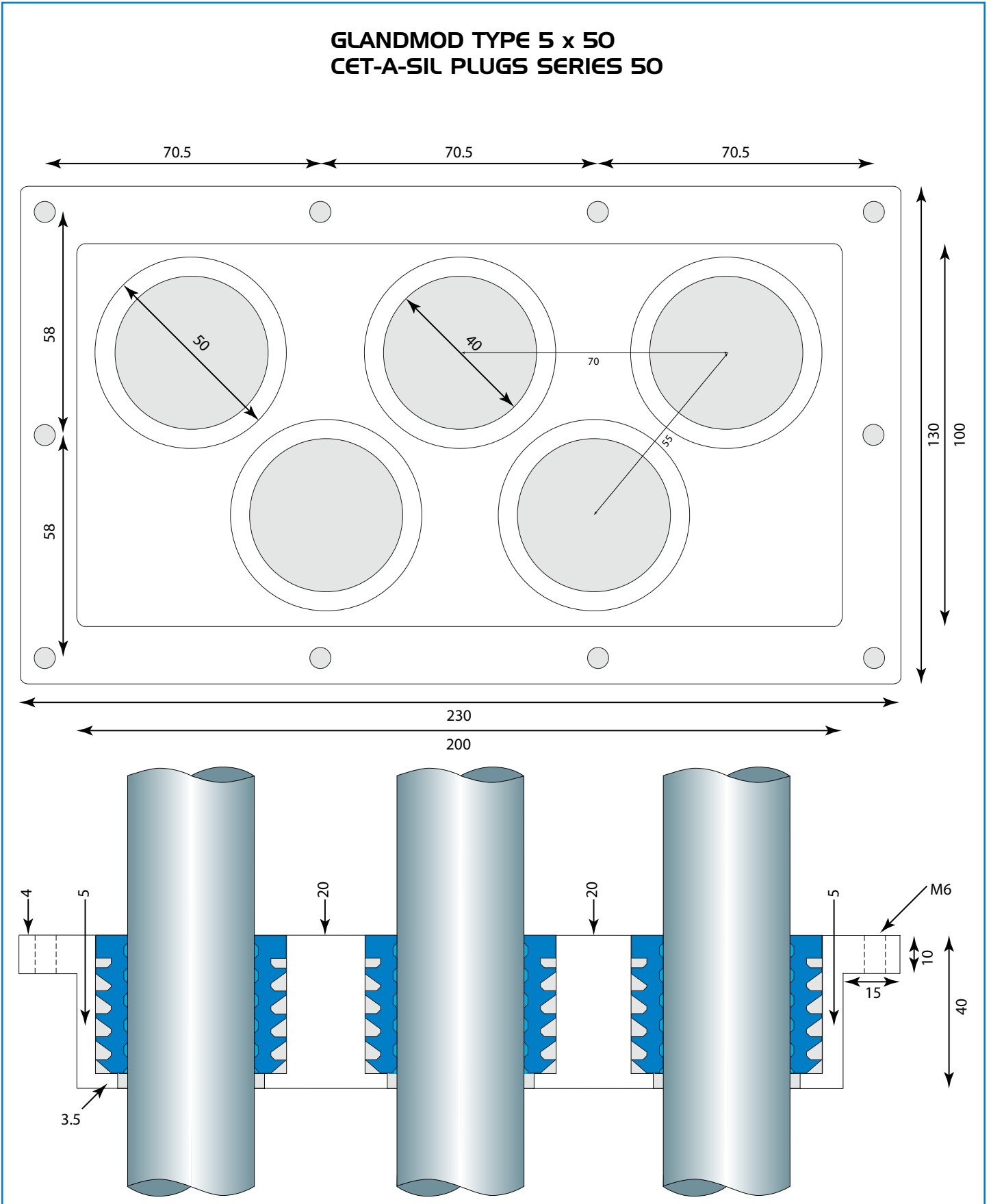
INSTALLATION INSTRUCTIONS CET-A-SIL® SEALING PLUGS IN GLANDMOD® MULTI-MODULES FOR CABLE GLAND SYSTEMS

**GLANDMOD TYPE 8 x 43
CET-A-SIL PLUGS SERIES 43**

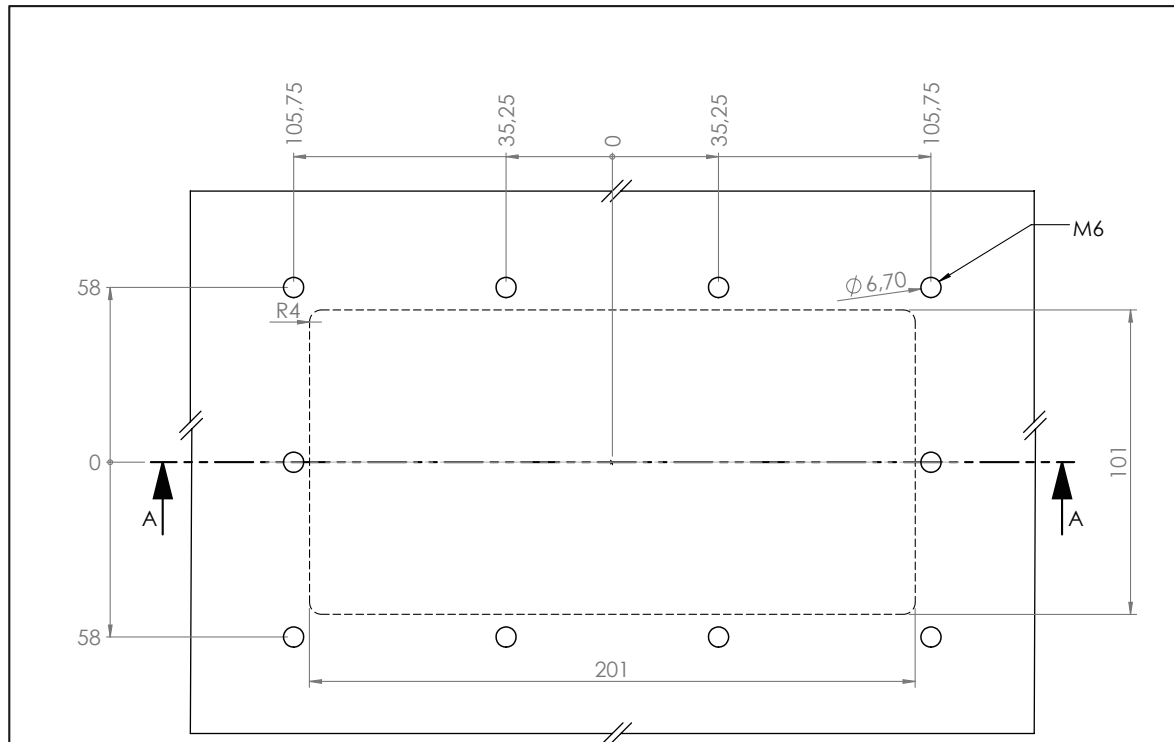


INSTALLATION INSTRUCTIONS CET-A-SIL® SEALING PLUGS IN GLANDMOD® MULTI-MODULES FOR CABLE GLAND SYSTEMS

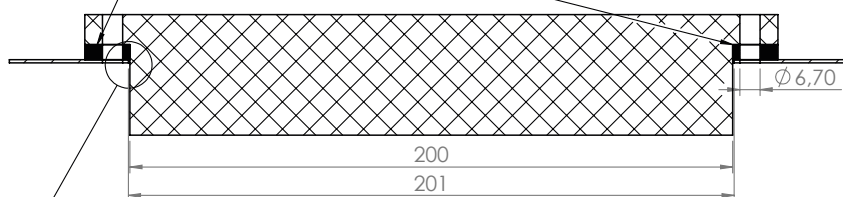
GLANDMOD TYPE 5 x 50 CET-A-SIL PLUGS SERIES 50



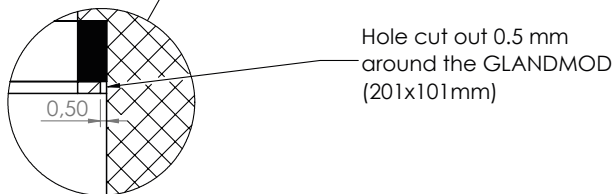
INSTALLATION INSTRUCTIONS CET-A-SIL® SEALING PLUGS IN GLANDMOD® MULTI-MODULES FOR CABLE GLAND SYSTEMS



CET-A-SIL gasket



SECTION A-A
SCALE 1 : 2



Hole cut out 0.5 mm
around the GLANDMOD
(201x101mm)

Recommended bolt DIN 912 - 8.8 steel M6
Apply a torque of 5 Nm



Description: GLANDMOD series 2 hole cut-out and bolt locations

Mat.: NFN rubber & HMPE plastic/aluminum

Ref.: AG

Date:

02-12-16

Scale: 1 : 2

No part of this document may be reproduced by photocopy, print, microfilm or any means without the written permission of BEELE Engineering bv of The Netherlands

Rev. 1

Rev. 2

T 0924

INSTALLATION INSTRUCTIONS CET-A-SIL® SEALING PLUGS IN GLANDMOD® MULTI-MODULES FOR CABLE GLAND SYSTEMS

GLANDMOD SERIES 01:

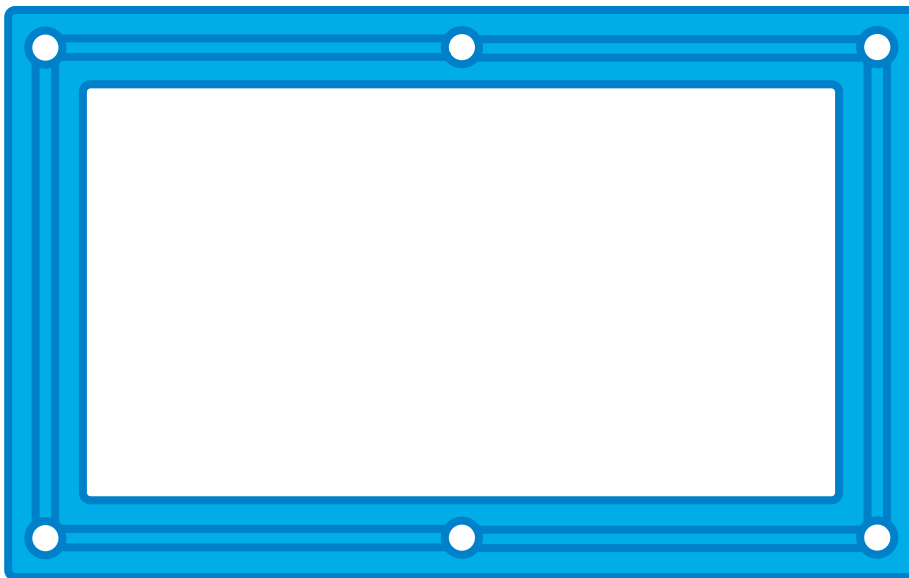
outer dimensions 120x75 mm
recessed dimensions 100x55 mm

TYPE	conduit openings	plug series	cable size	art. no. HMPE	art. no aluminum	art. no. NOFIRNO
14x15	14	15	3.7-7.3	60.9300	60.9320	60.9340
8x20	8	20	3.7-10.3	60.9301	60.9321	60.9341
5x25	5	25	7.7-14.3	60.9302	60.9322	60.9342
3x30	3	30	9.7-17.3	60.9303	60.9323	60.9343

GLANDMOD SERIES 02:

outer dimensions 230x130 mm
recessed dimensions 200x100 mm

TYPE	conduit openings	plug series	cable size	art. no. HMPE	art. no aluminum	art. no. NOFIRNO
21x25	21	25	7.7-10.3	60.9310	60.9330	60.9350
18x30	18	30	9.7-17.3	60.9311	60.9331	60.9351
11x35	11	35	14.7-22.3	60.9312	60.9332	60.9352
8x43	8	43	19.7-28.3	60.9313	60.9333	60.9353
5x50	5	50	24.7-34.3	60.9314	60.9334	60.9354



NOFIRNO GASKET SERIES 01

profiled, thickness overall 5 mm,
width 10 mm
dimensions outside 120x75 mm
dimensions inside 100x55 mm
art. nr. 51.9301

NOFIRNO GASKET SERIES 02

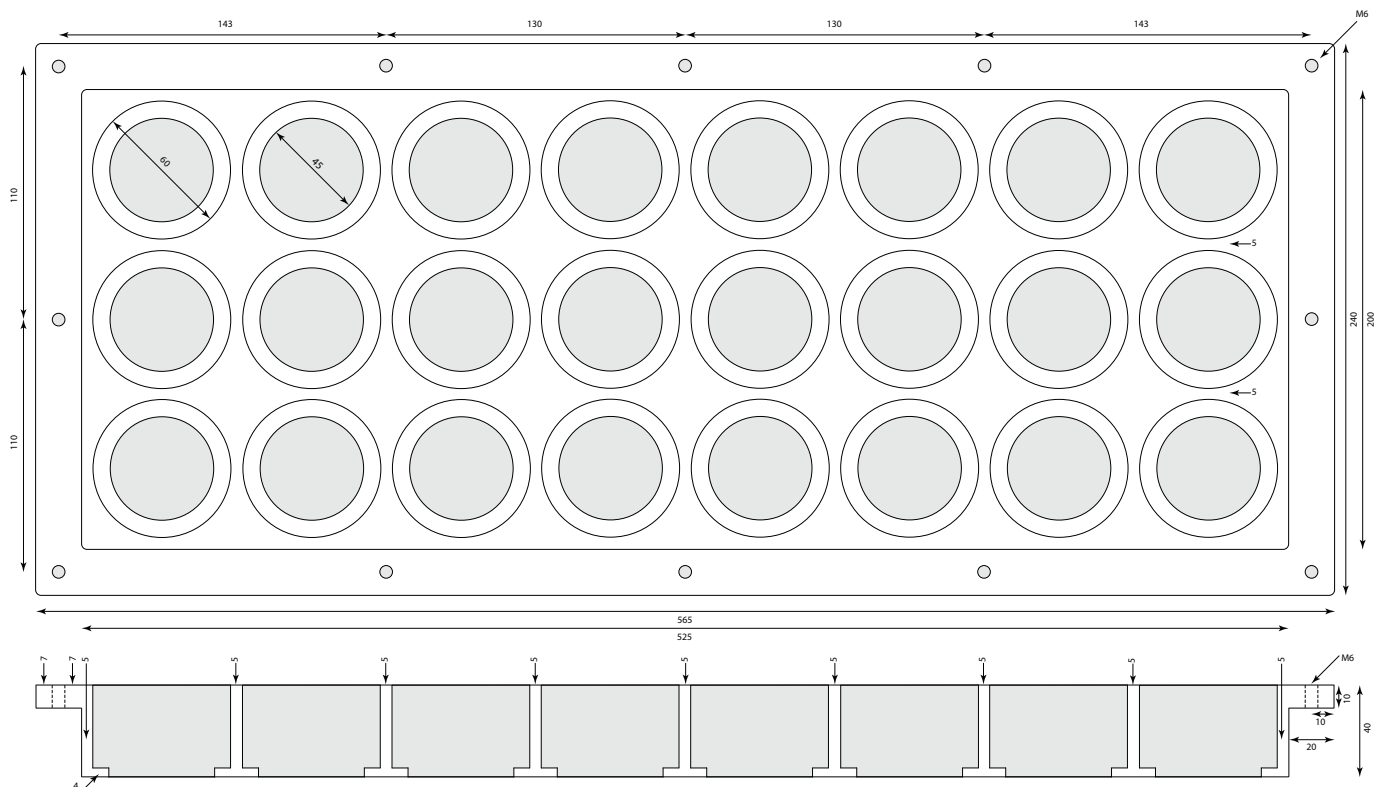
profiled, thickness overall 5 mm,
width 15 mm
dimensions outside 230x130 mm
dimensions inside 200x100 mm
art. nr. 51.9302

Note: the functionality with regard to tightness of the multi-gland system can be guaranteed only by application of the CET-A-SIL® plugs in GLANDMOD® modules. Application of CET-A-SIL® plugs cannot be guaranteed in other conduit systems.

Two standard series of the GLANDMOD® modules are available. On request modules with various hole configurations can be made to size. The largest one so far made is a module HMPE 1110 x 768 mm with 42 conduit openings 80 mm. For special sizes, please contact our sales department.

INSTALLATION INSTRUCTIONS CET-A-SIL® SEALING PLUGS IN GLANDMOD® MULTI-MODULES FOR CABLE GLAND SYSTEMS

GLANDMOD MULTI-MODULE 24 x 60:
 outer dimensions 565 x 240 mm
 recessed dimensions 525 x 200 mm
 CET-A-SIL plugs series 60
 cable diameters 28.7 - 40.3



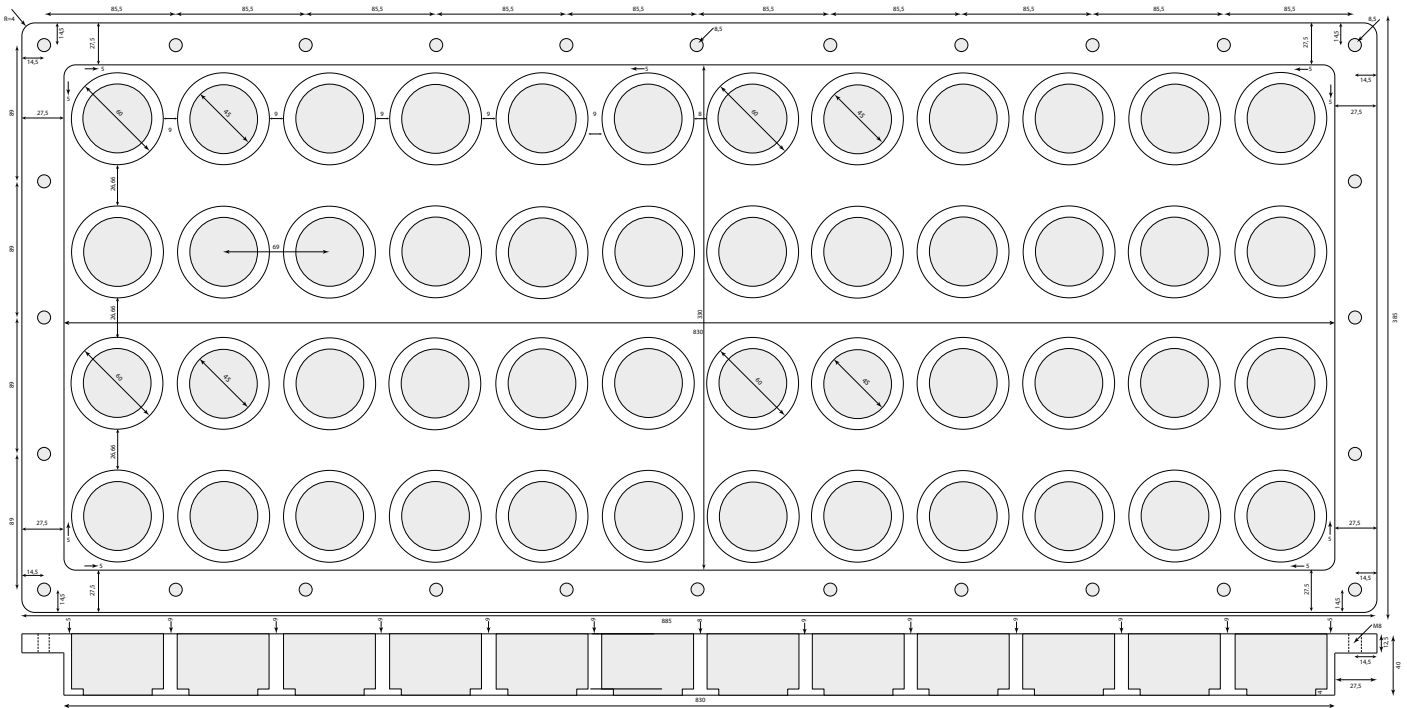
GLANDMOD® CUSTOM MADE:
 Type 12x60 art. no. 60.9390
 Type 24x60 art. no. 60.9391
 Type 48x60 art. no. 60.9392

INSTALLATION INSTRUCTIONS CET-A-SIL® SEALING PLUGS IN GLANDMOD® MULTI-MODULES FOR CABLE GLAND SYSTEMS



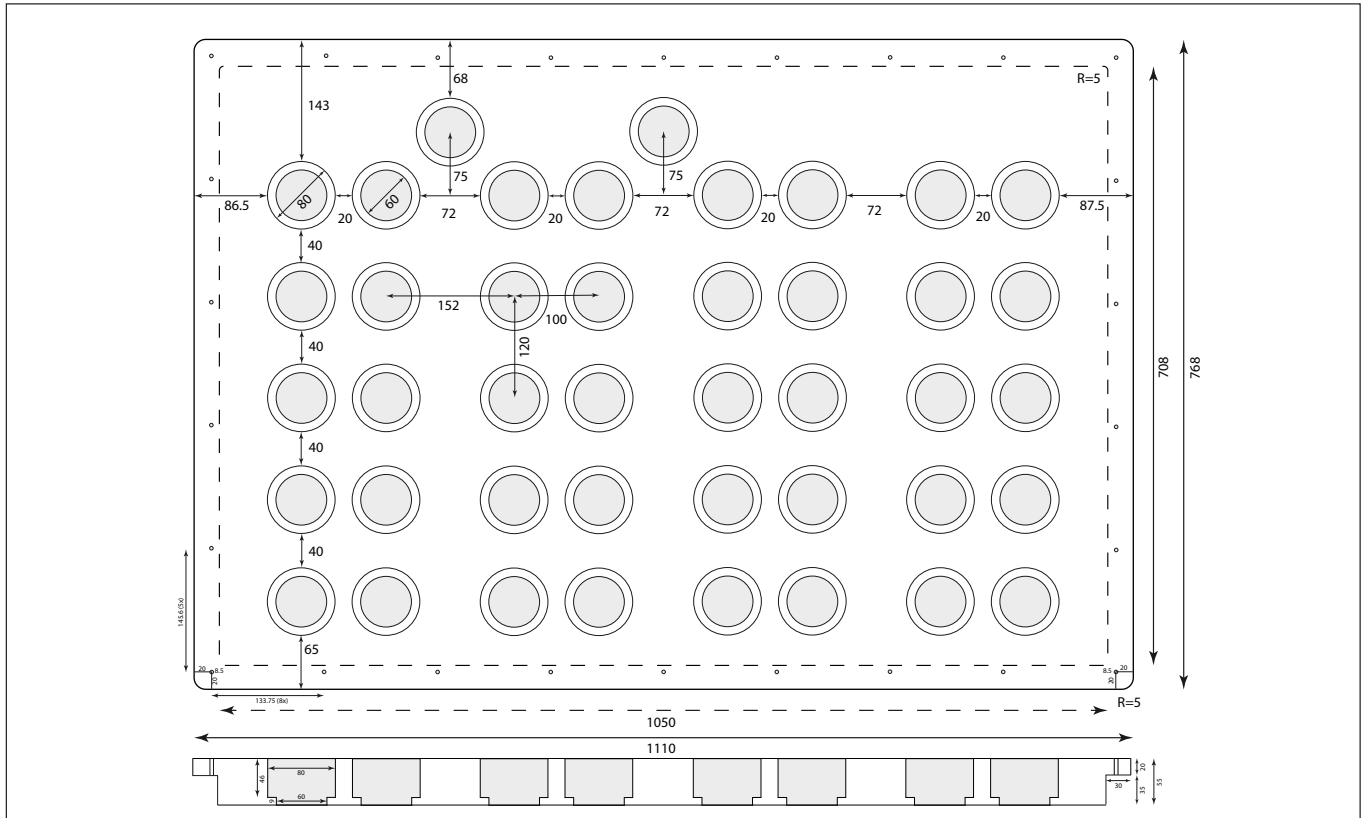
GLANDMOD® MULTI-MODULE 12 x 60
CET-A-SIL® plugs 60/38

INSTALLATION INSTRUCTIONS CET-A-SIL® SEALING PLUGS IN GLANDMOD® MULTI-MODULES FOR CABLE GLAND SYSTEMS



GLANDMOD 48x60

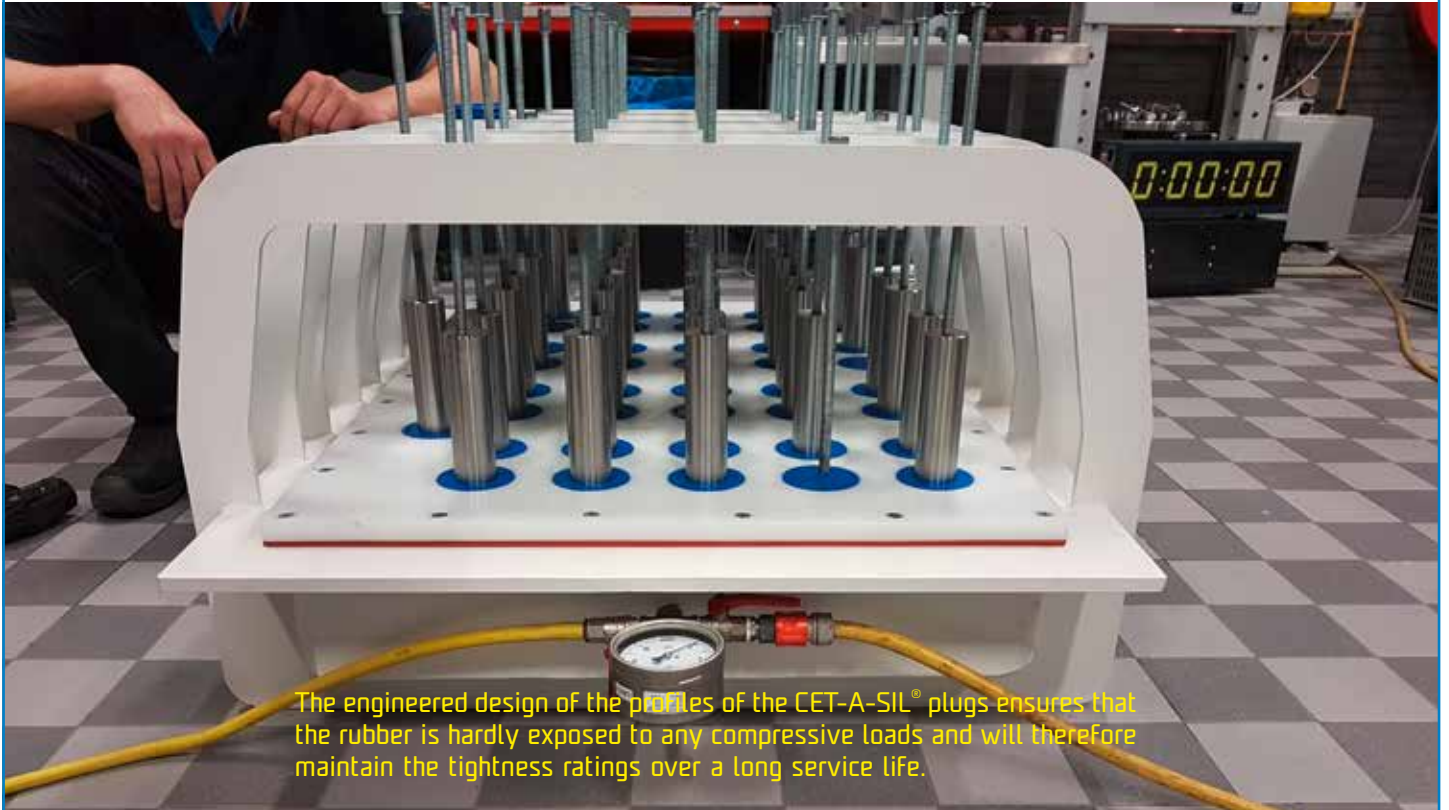
GLANDMOD 42x80



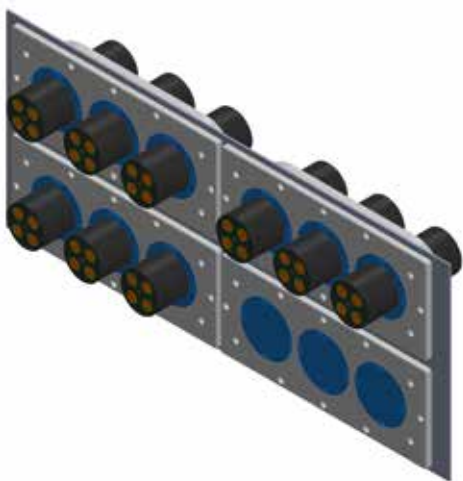
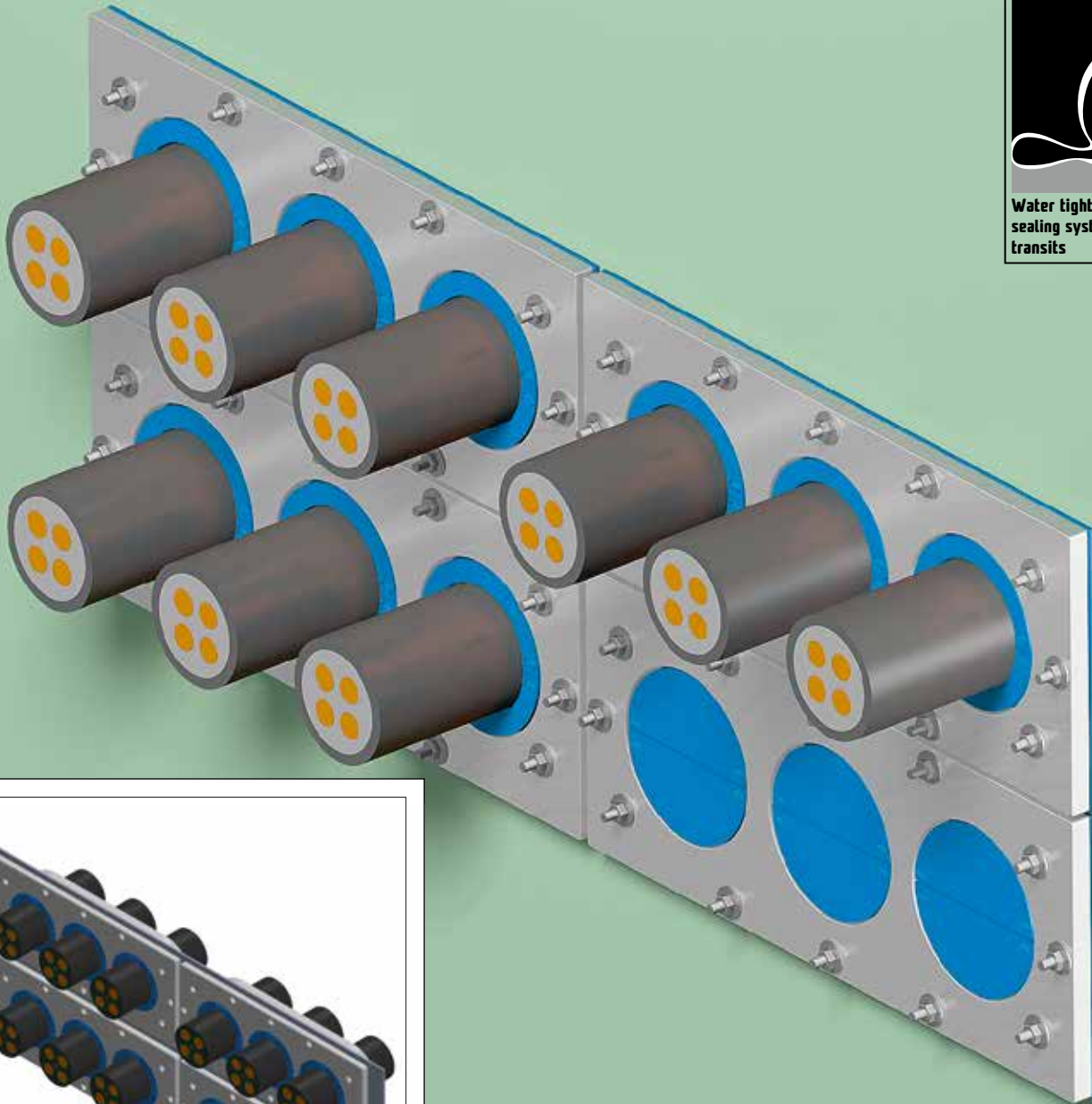
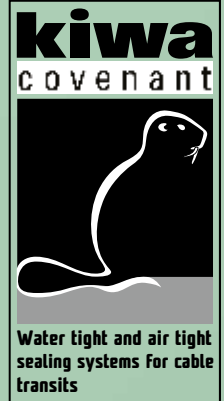
	Description: GLANDMOD type 42x80		
	Mat.: Engineered plastic		
Ref.: JAB	Date: 25-11-19	Scale: 1 : 4	
<small>No part of this document may be reproduced by photocopy, print, microfilm or any means without the written permission of BEELE Engineering bv of The Netherlands</small>	Rev. 1	CET 42x80	
	Rev. 2		

INSTALLATION INSTRUCTIONS CET-A-SIL[®] SEALING PLUGS IN GLANDMOD[®] MULTI-MODULES FOR CABLE GLAND SYSTEMS

GLANDMOD[®] modules with CET-A-SIL[®] sealing plugs have been pressure tested even the bigger sizes as below type 42x80 up to 0.6 bar In this case from the bottom side (worst case). Load on the unit at 0.6 bar almost 4.7 tons. Smaller units have been blast tested up to 1 bar with post-static pressure of 1 bar with load on the flanged side.



**INSTALLATION INSTRUCTIONS CET-A-SIL® SEALING PLUGS IN
GLANDMOD® MULTI-MODULES FOR CABLE GLAND SYSTEMS**



CET-A-SIL PLUGS 82/60 AND 82/0

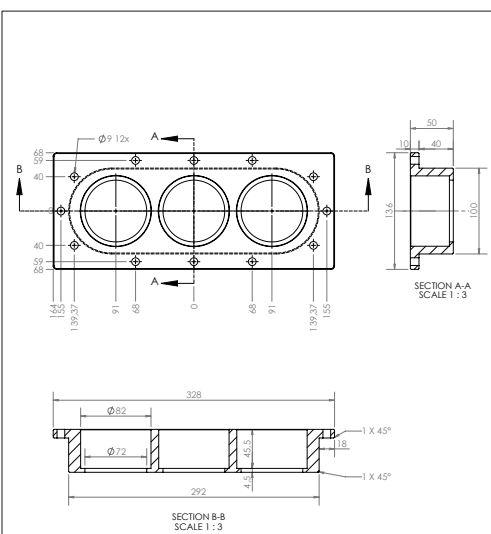
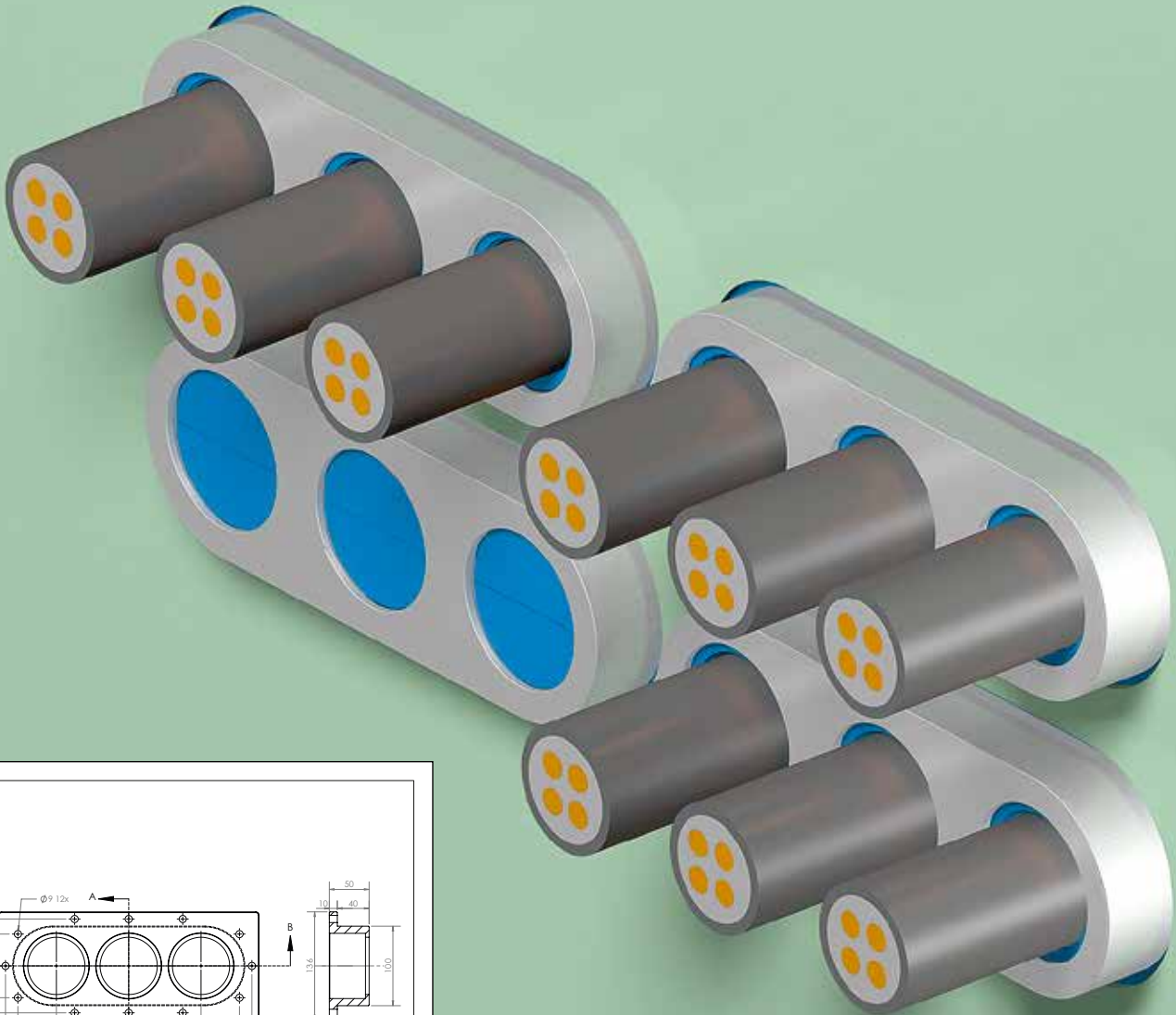
Custom designed units type 3x82 with CET-A-SIL plugs 82/60 and 82/0.

Front view of the configuration.

NB: afterwards changed to the 80 series of plugs.

	Description: GLANDMOD type 3x82 on steel plate (4 units) front view		
	Mat.: CET-A-SIL rubber/PMPE plastic		
Ref.: AG	Date:	13-01-16	Scale: 1 : 3
No part of this document may be reproduced by photocopy, print, microfilm or any means without the written permission of BEELE Engineering bv of The Netherlands	Rev. 1		T 0682
	Rev. 2		

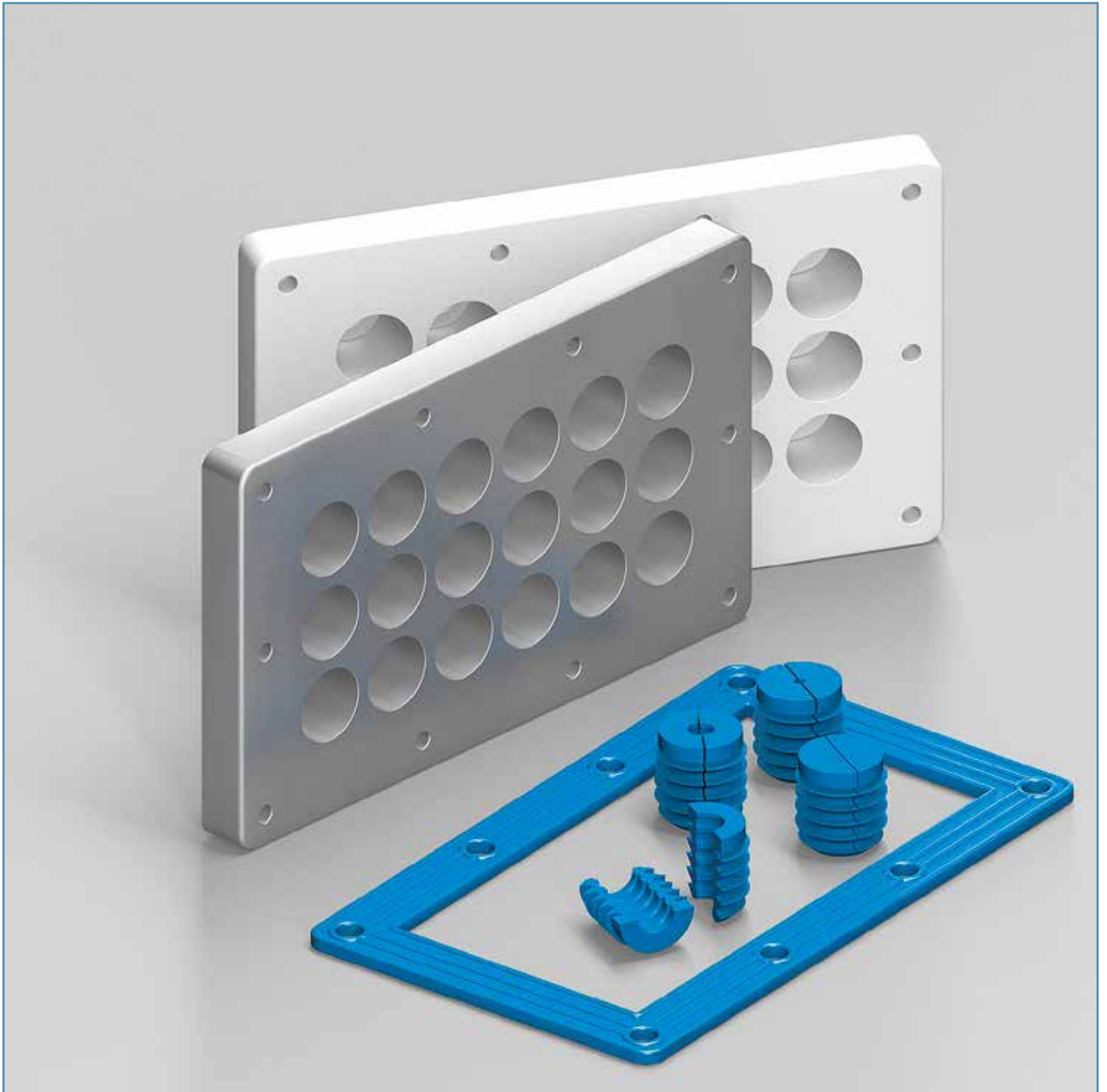
INSTALLATION INSTRUCTIONS CET-A-SIL® SEALING PLUGS IN GLANDMOD® MULTI-MODULES FOR CABLE GLAND SYSTEMS



Custom designed units type 3x82 with CET-A-SIL plugs 82/60 and 82/0.

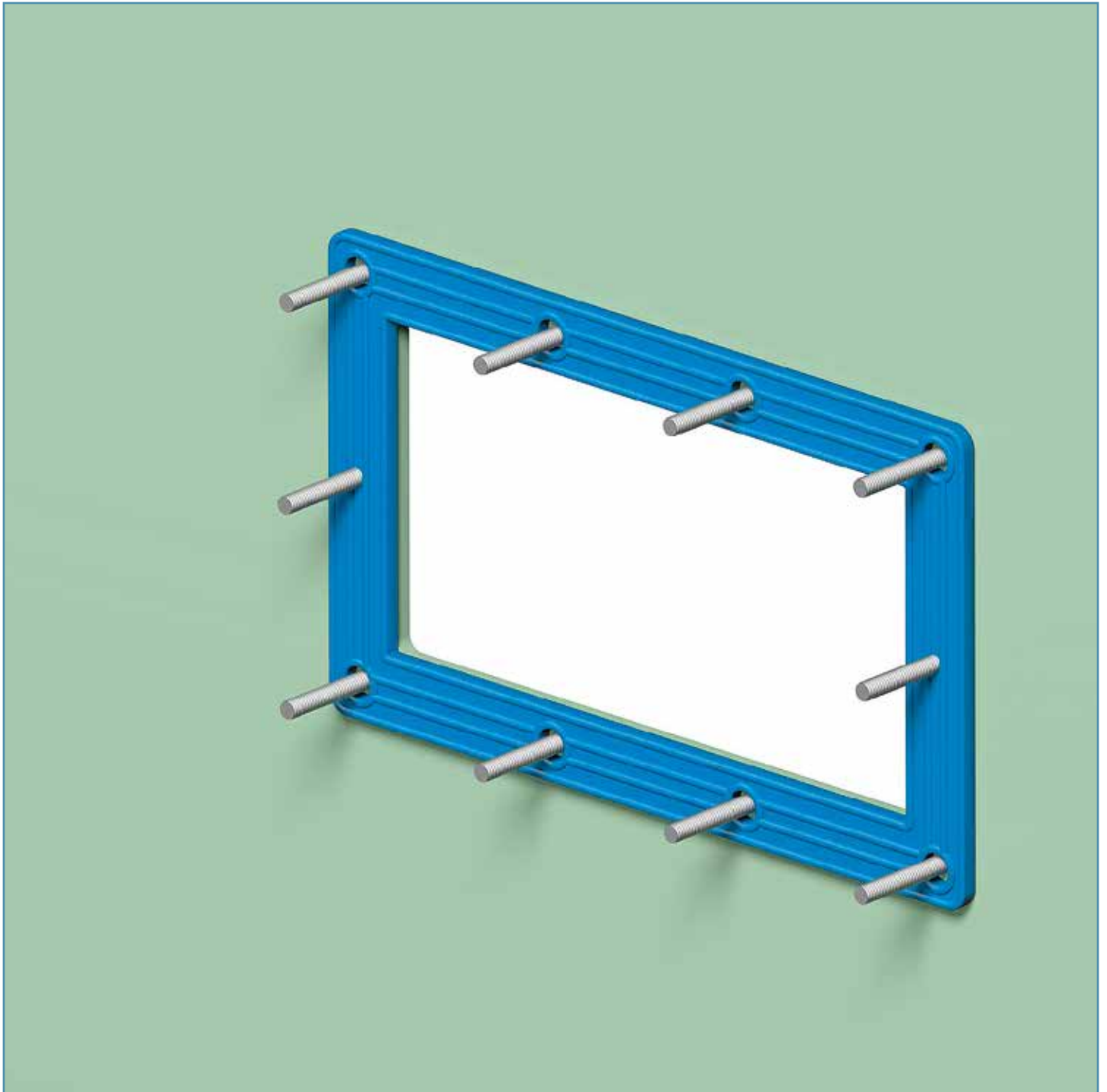
Back side of the configuration.

INSTALLATION INSTRUCTIONS CET-A-SIL® SEALING PLUGS IN GLANDMOD® MULTI-MODULES FOR CABLE GLAND SYSTEMS



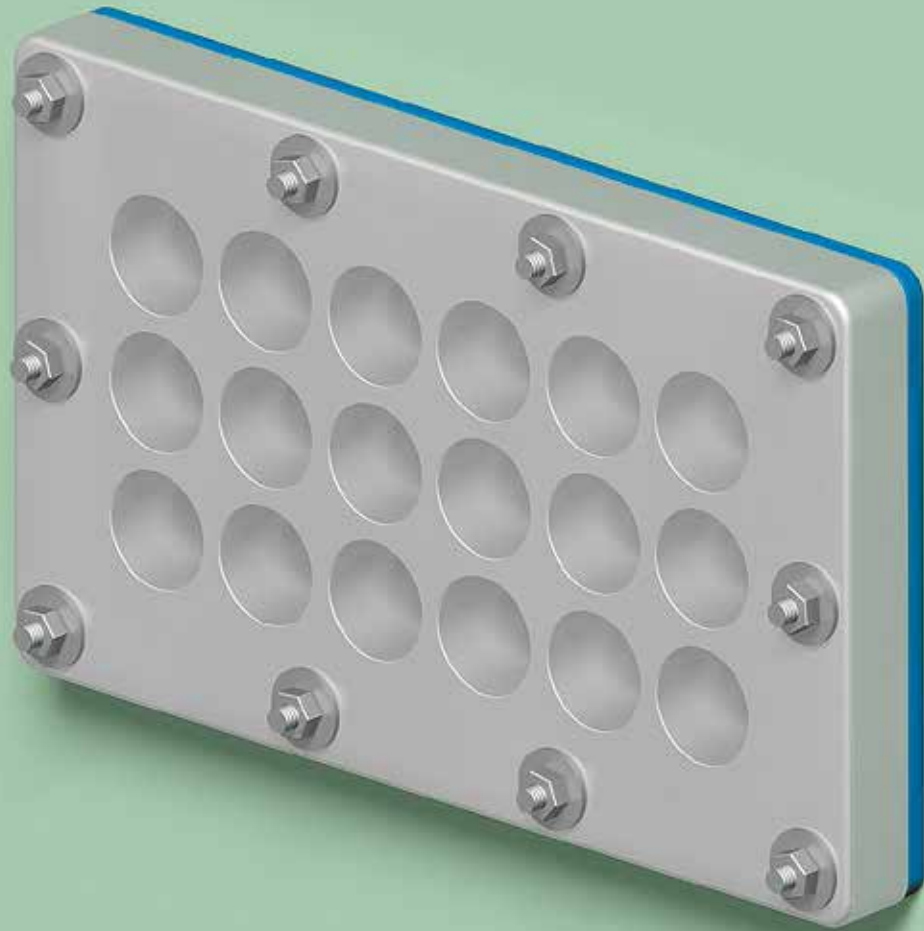
The GLANDMOD® modules are selected on the basis of the amounts and dimensions of the cables to be sealed. Besides the standard sizes of modules, they can be custom made to dimensions and hole configurations. The multi-modules are made standard from HMPE for gas and watertight applications to sizes 1110x768 mm. For shipbuilding and industrial installations the GLANDMOD® modules can be made from seawater resistant aluminum AW-6060 to sizes 130x750 mm. For fire rated installations the standard modules are made from 85° Shore A hard NOFIRNO® rubber. The CET-A-SIL® plugs are fire resistant. The gaskets are made from NOFIRNO® rubber. Gasket sheets are available to cut non-standard sizes for custom made modules.

INSTALLATION INSTRUCTIONS CET-A-SIL® SEALING PLUGS IN GLANDMOD® MULTI-MODULES FOR CABLE GLAND SYSTEMS



The GLANDMOD® modules can be bolted to the construction. A fitting NOFIRNO® gasket is placed over the bolts against the partition. The NOFIRNO® gaskets have a special profiling to exclude the need for excessive compression and the need for re-tightening from time to time.

INSTALLATION INSTRUCTIONS CET-A-SIL® SEALING PLUGS IN GLANDMOD® MULTI-MODULES FOR CABLE GLAND SYSTEMS

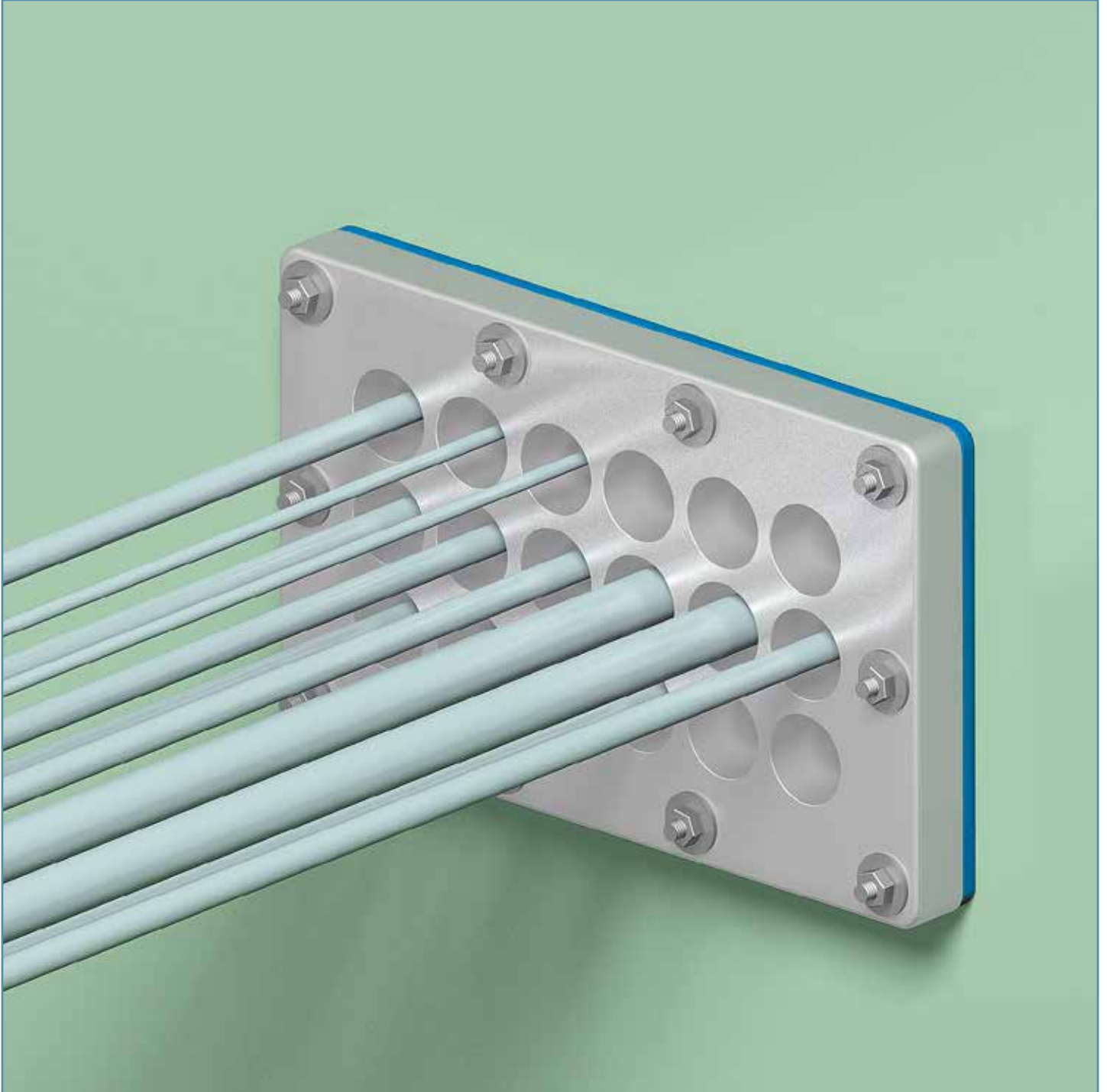


The selected module is fixed against the construction. Inside at the back of the conduit openings is a shoulder to prevent the sealing plugs to be inserted too deep.

Note: the tightening forces should not be extremely high. Depending on the size of the gaskets tightening forces of about 6-8 Nm are sufficient to obtain highest tightness ratings with long lasting performance.

The gaskets have been tested on water tightness of more than 2.5 bar and shock tested up to 15 bar. KIWA covenant K90719/01.

INSTALLATION INSTRUCTIONS CET-A-SIL® SEALING PLUGS IN GLANDMOD® MULTI-MODULES FOR CABLE GLAND SYSTEMS



Cables can be pulled through the conduit openings in random order.

INSTALLATION INSTRUCTIONS CET-A-SIL® SEALING PLUGS IN GLANDMOD® MULTI-MODULES FOR CABLE GLAND SYSTEMS



Before installation of the sealing plugs, check to ensure that the plug series being applied are correct for fitting in the GLANDMOD® multi-module, and also if the outer dimensions of the ducted cables are within the tolerances of the sealing plug.

The segments of the CET-A-SIL® sealing plug are treated with CSD® lubricant on the outside. CSD® lubricant is an acid free, pharmaceutical petroleum jelly and will disappear after installation

Please refer to the Safety Data Sheet of the CSD® lubricant for more information.

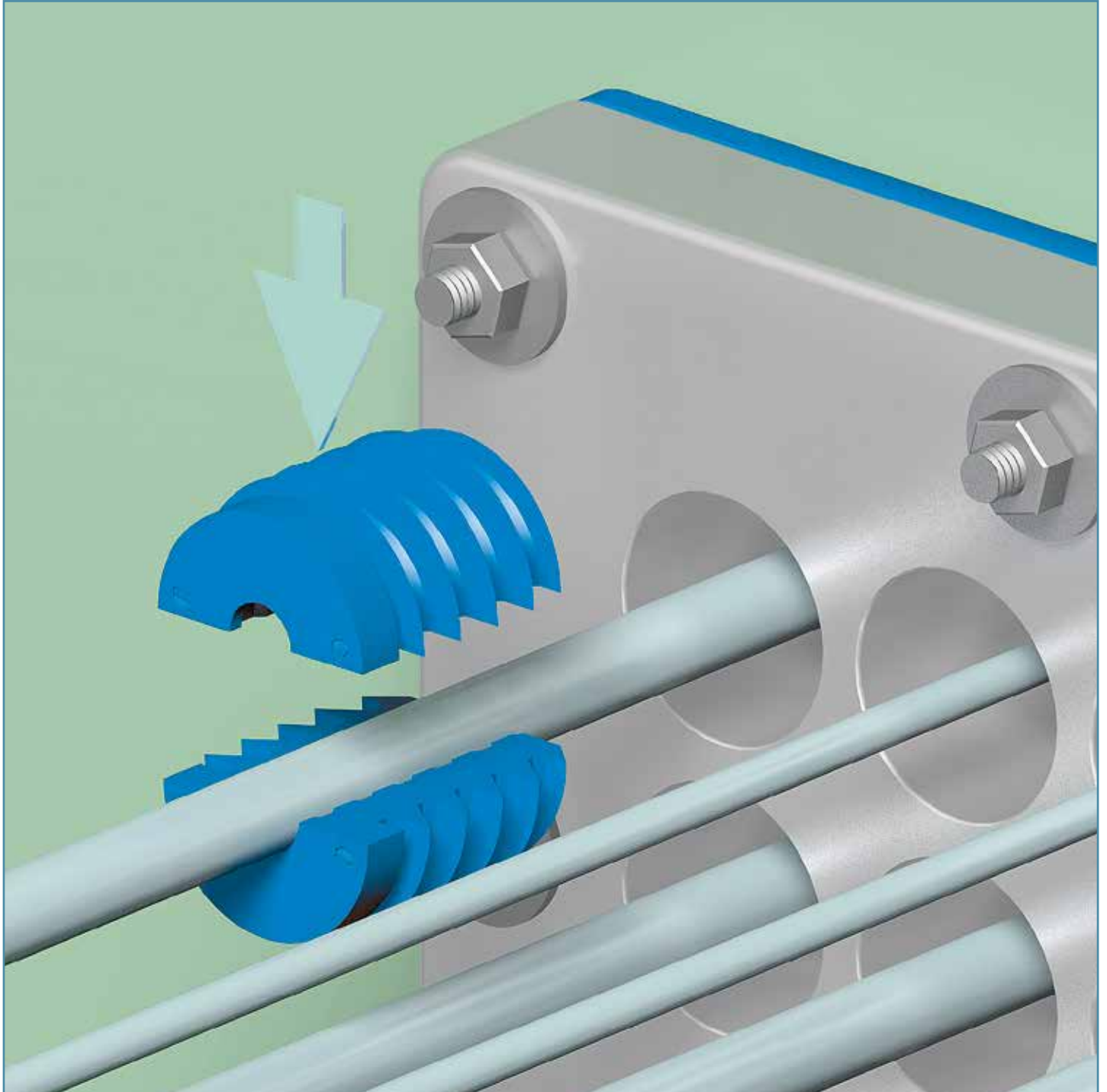
INSTALLATION INSTRUCTIONS CET-A-SIL[®] SEALING PLUGS IN GLANDMOD[®] MULTI-MODULES FOR CABLE GLAND SYSTEMS



The inside surfaces of both segments of the CET-A-SIL[®] sealing plug are also treated with CSD[®] lubricant. Also the flat surfaces on the plug should be treated with the lubricant. Always use sufficient lubricant. It contributes to the ease of installation of the plugs.

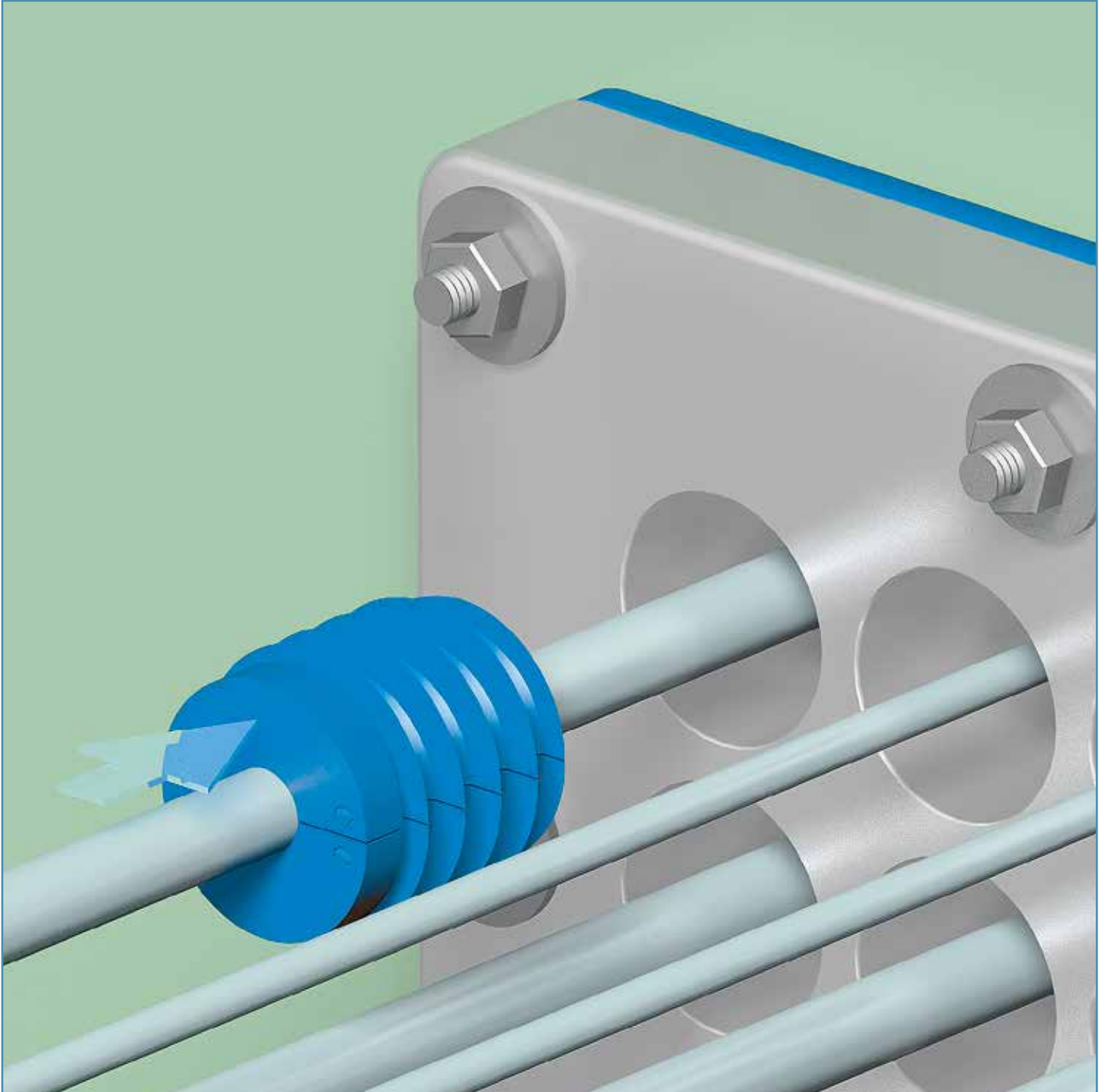
Please refer to the Safety Data Sheet of the CSD[®] lubricant for more information.

**INSTALLATION INSTRUCTIONS CET-A-SIL® SEALING PLUGS IN
GLANDMOD® MULTI-MODULES FOR CABLE GLAND SYSTEMS**



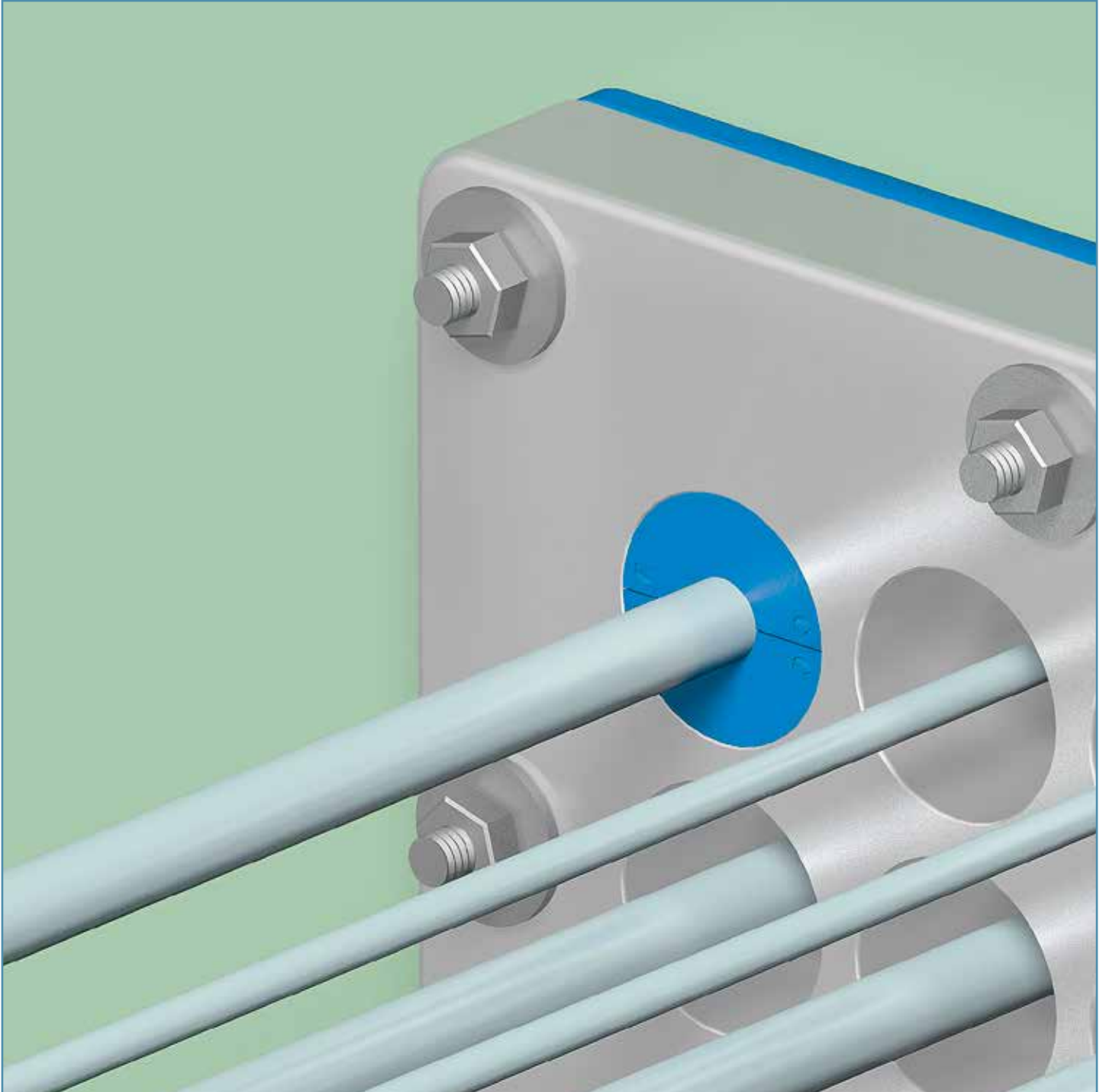
Both plug halves are placed around the ducted cable.

INSTALLATION INSTRUCTIONS CET-A-SIL® SEALING PLUGS IN GLANDMOD® MULTI-MODULES FOR CABLE GLAND SYSTEMS



Both segments of the CET-A-SIL® sealing plug are pushed by hand evenly, serration by serration, into the conduit opening.

INSTALLATION INSTRUCTIONS CET-A-SIL® SEALING PLUGS IN GLANDMOD® MULTI-MODULES FOR CABLE GLAND SYSTEMS

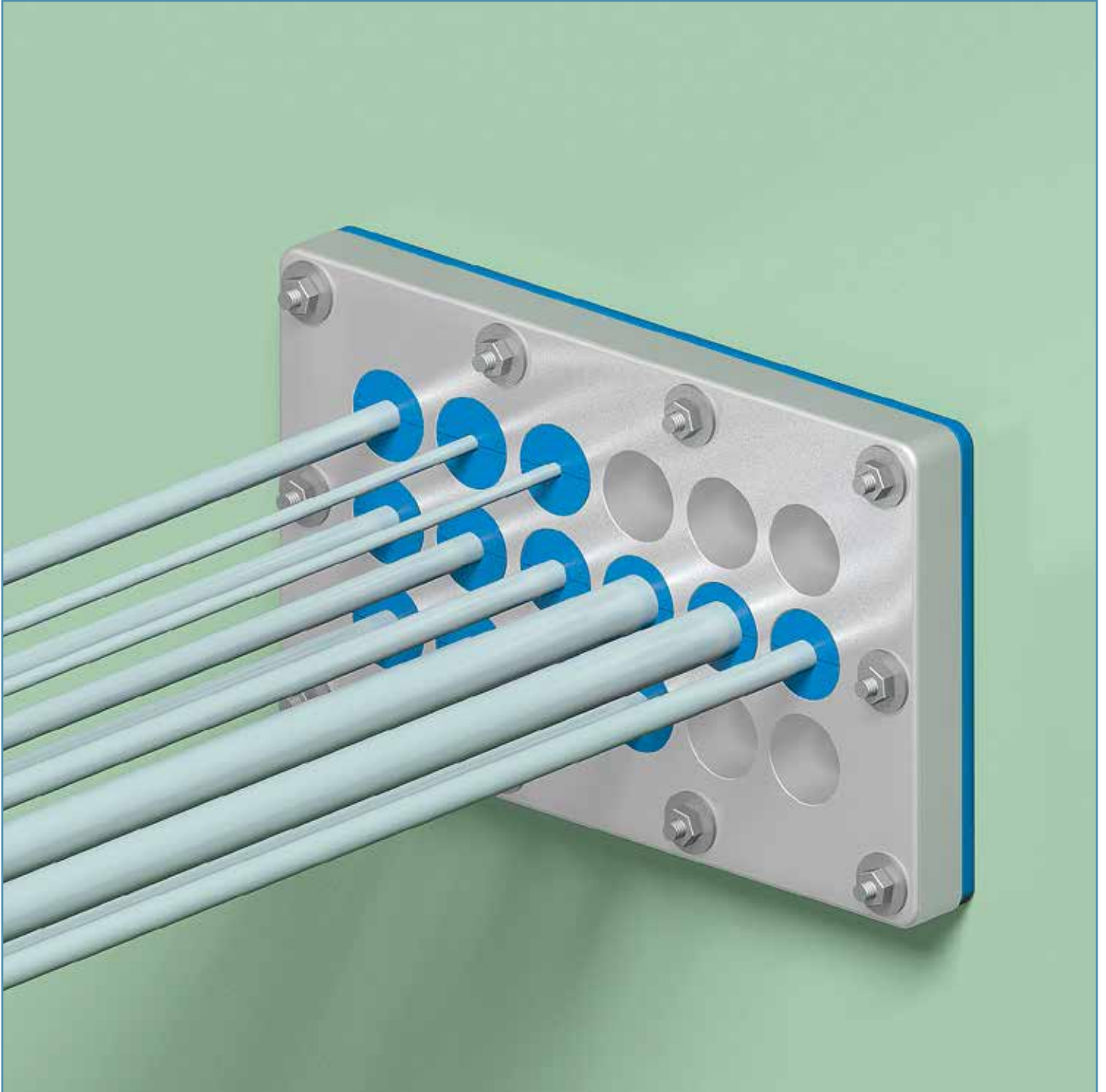


The flanged edge of the CET-A-SIL® sealing plug is fully inserted into the conduit opening. This automatically guarantees that the CET-A-SIL® sealing plug is inserted against the shoulder inside the GlandMOD® module.

In praxis the flanges of the plugs are clearly marked with the CET-A-SIL® logo.



INSTALLATION INSTRUCTIONS CET-A-SIL® SEALING PLUGS IN GLANDMOD® MULTI-MODULES FOR CABLE GLAND SYSTEMS



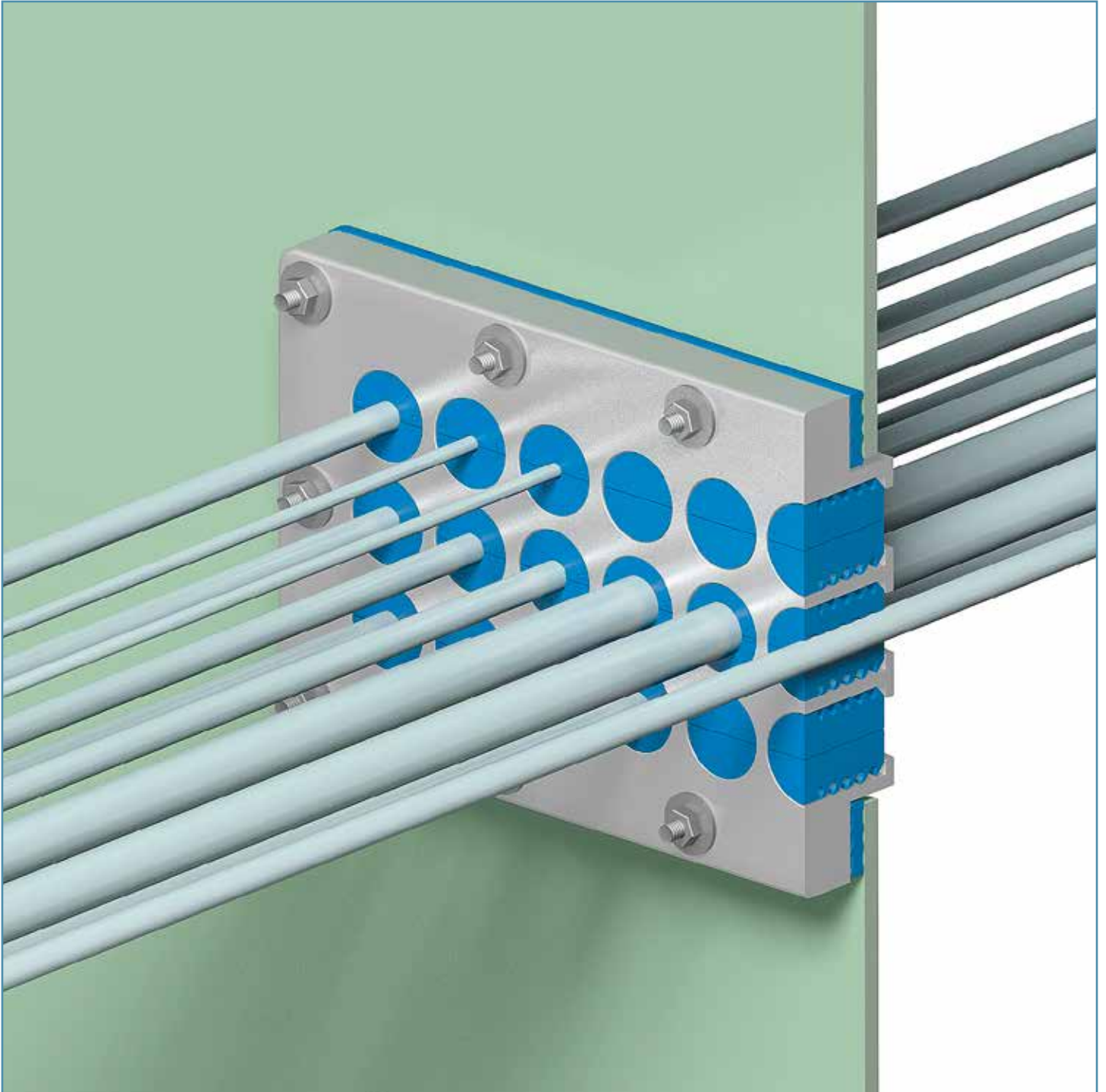
In this way all ducted cables are sealed.

INSTALLATION INSTRUCTIONS CET-A-SIL® SEALING PLUGS IN GLANDMOD® MULTI-MODULES FOR CABLE GLAND SYSTEMS



Blind plugs are used to seal the conduit openings not occupied with cable. These conduit openings are available for later extensions of the cable set.

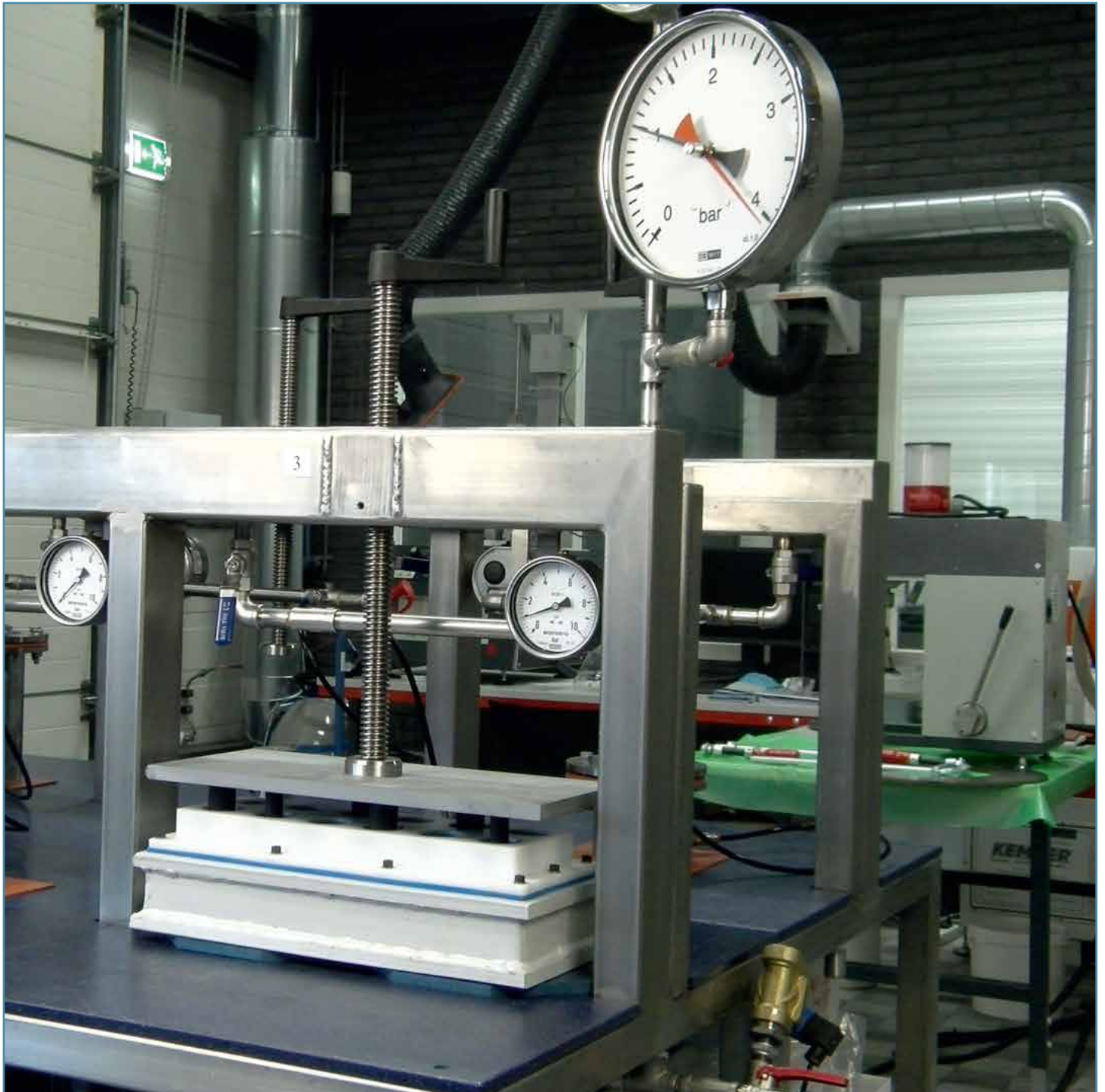
INSTALLATION INSTRUCTIONS CET-A-SIL® SEALING PLUGS IN GLANDMOD® MULTI-MODULES FOR CABLE GLAND SYSTEMS



The GLANDMOD® system is watertight up to 0.4 bar. KIWA covenant K90720/01.

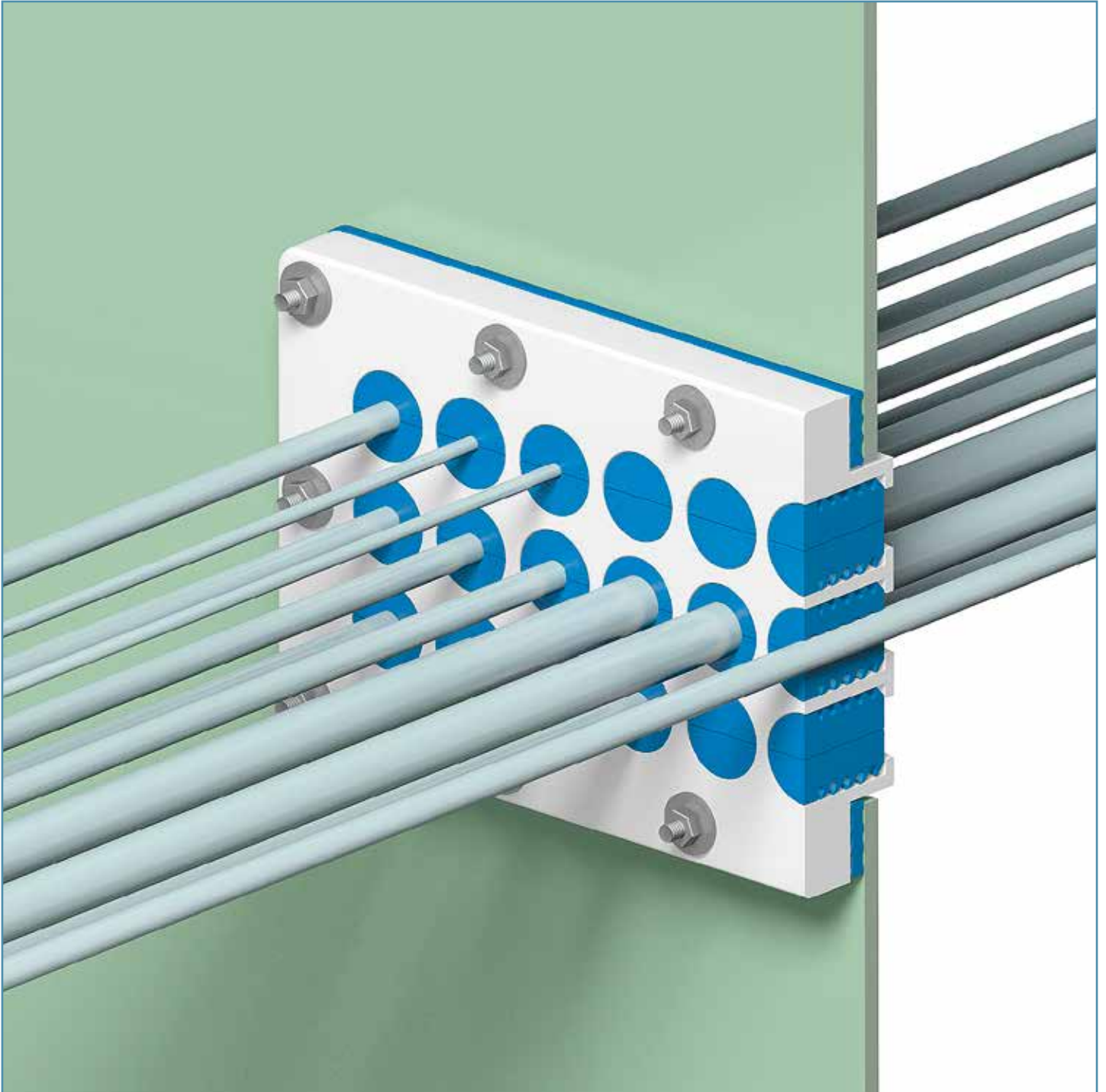
The gaskets have been tested on water tightness of more than 2.5 bar and shock tested up to 15 bar. KIWA covenant K90719/01.

INSTALLATION INSTRUCTIONS CET-A-SIL® SEALING PLUGS IN GLANDMOD® MULTI-MODULES FOR CABLE GLAND SYSTEMS



The CET-A-SIL® sealing plugs have been successfully subjected to a high speed shock pressure up to 1 bar in 0.2 seconds without showing any displacement. Test report WT 1603-183 signed by KIWA Netherlands.

INSTALLATION INSTRUCTIONS CET-A-SIL® SEALING PLUGS IN GLANDMOD® MULTI-MODULES FOR CABLE GLAND SYSTEMS



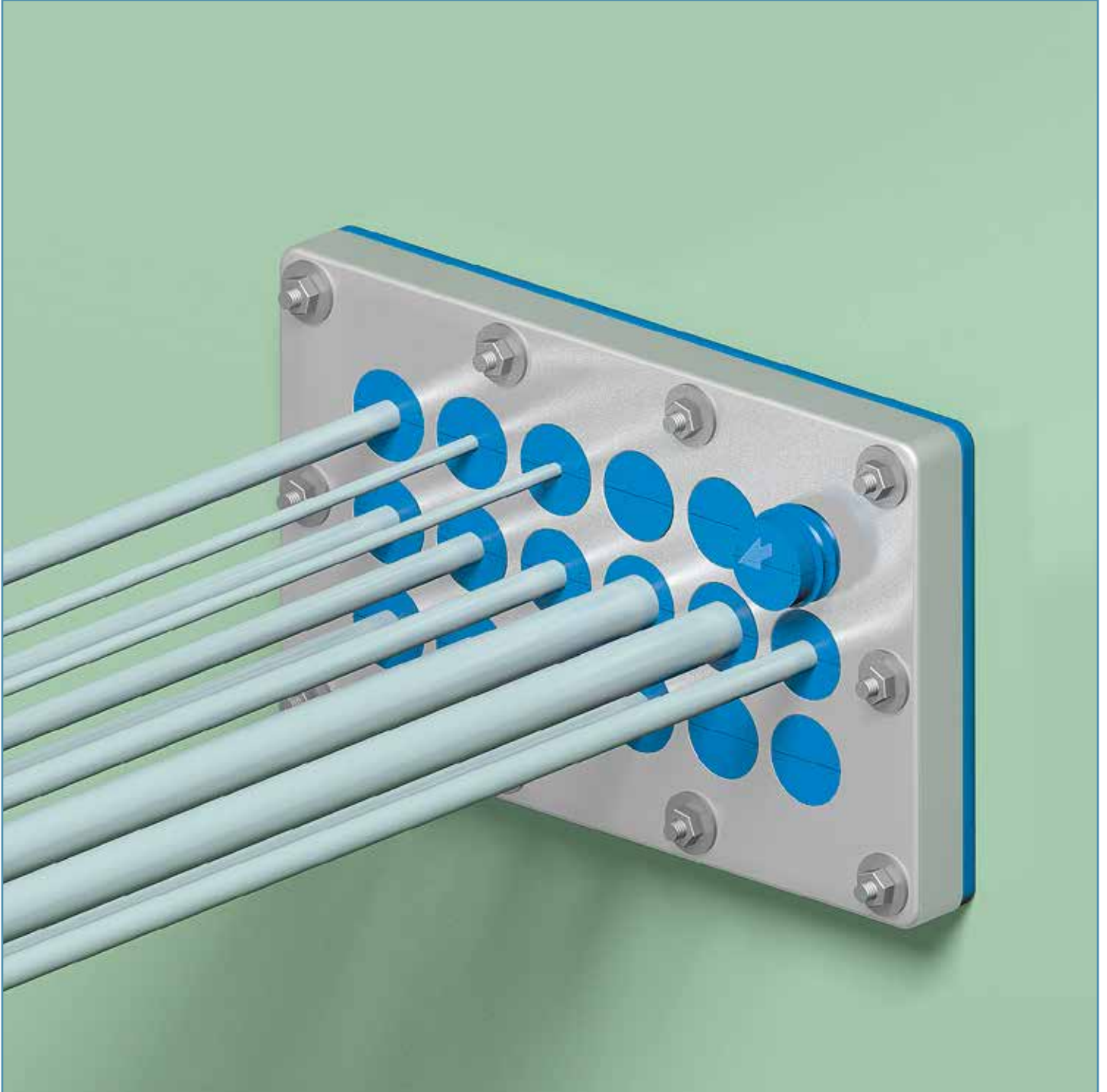
The GLANDMOD® multi-module made from HMPE has a white colour. This system is used only for gas and watertight applications and IP ratings. This is also applicable for the GLANDMOD® system made from aluminum.

INSTALLATION INSTRUCTIONS CET-A-SIL® SEALING PLUGS IN GLANDMOD® MULTI-MODULES FOR CABLE GLAND SYSTEMS



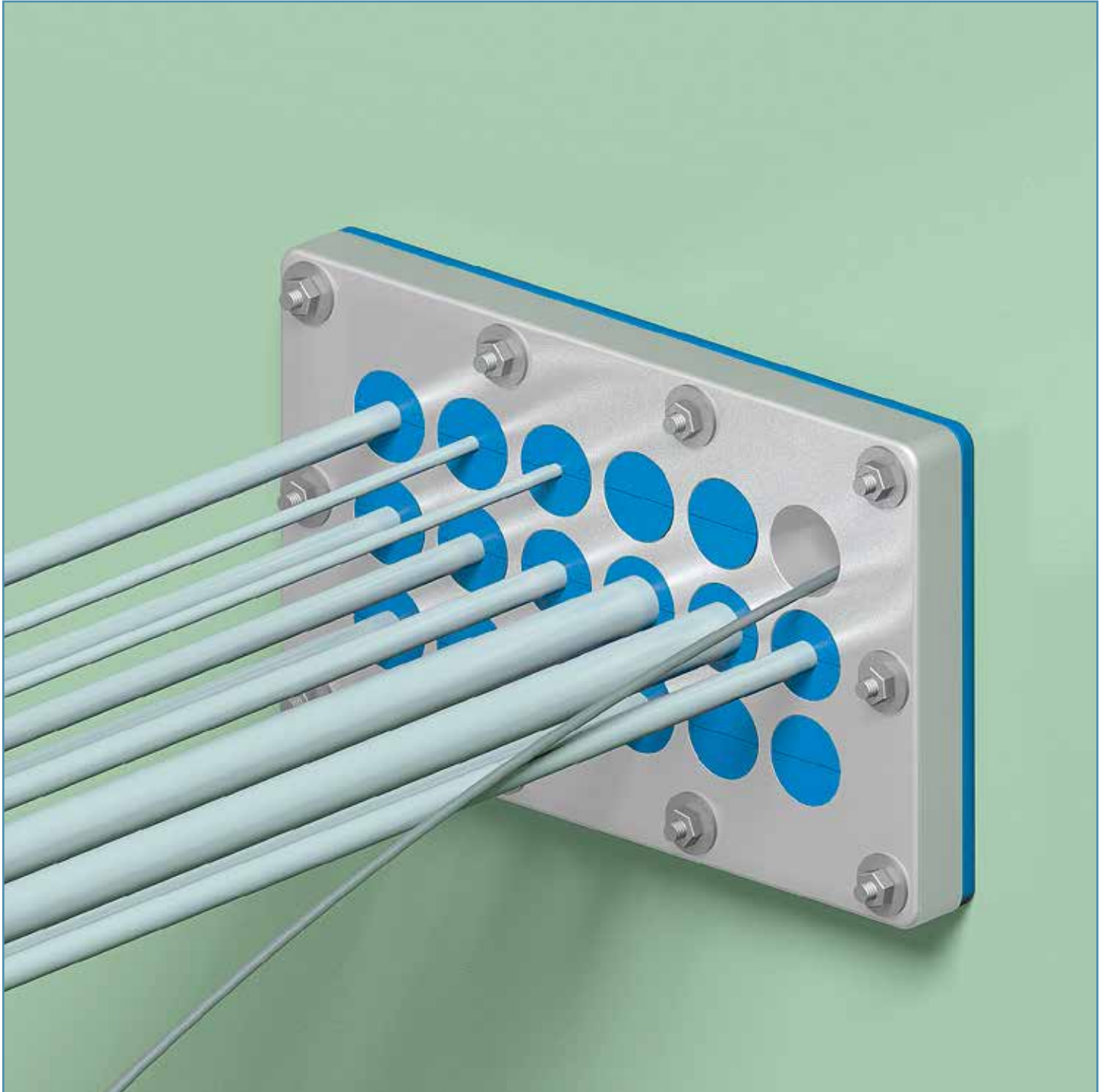
The GLANDMOD® module made from NOFIRNO® rubber in combination with the standard CET-A-SIL® plugs can be used for fire rated applications which are also gas and watertight and IP rated.

INSTALLATION INSTRUCTIONS CET-A-SIL® SEALING PLUGS IN GLANDMOD® MULTI-MODULES FOR CABLE GLAND SYSTEMS



If an extra cable has to be ducted at a later stage, it is a simple job to remove blind plugs from one of the conduit openings.

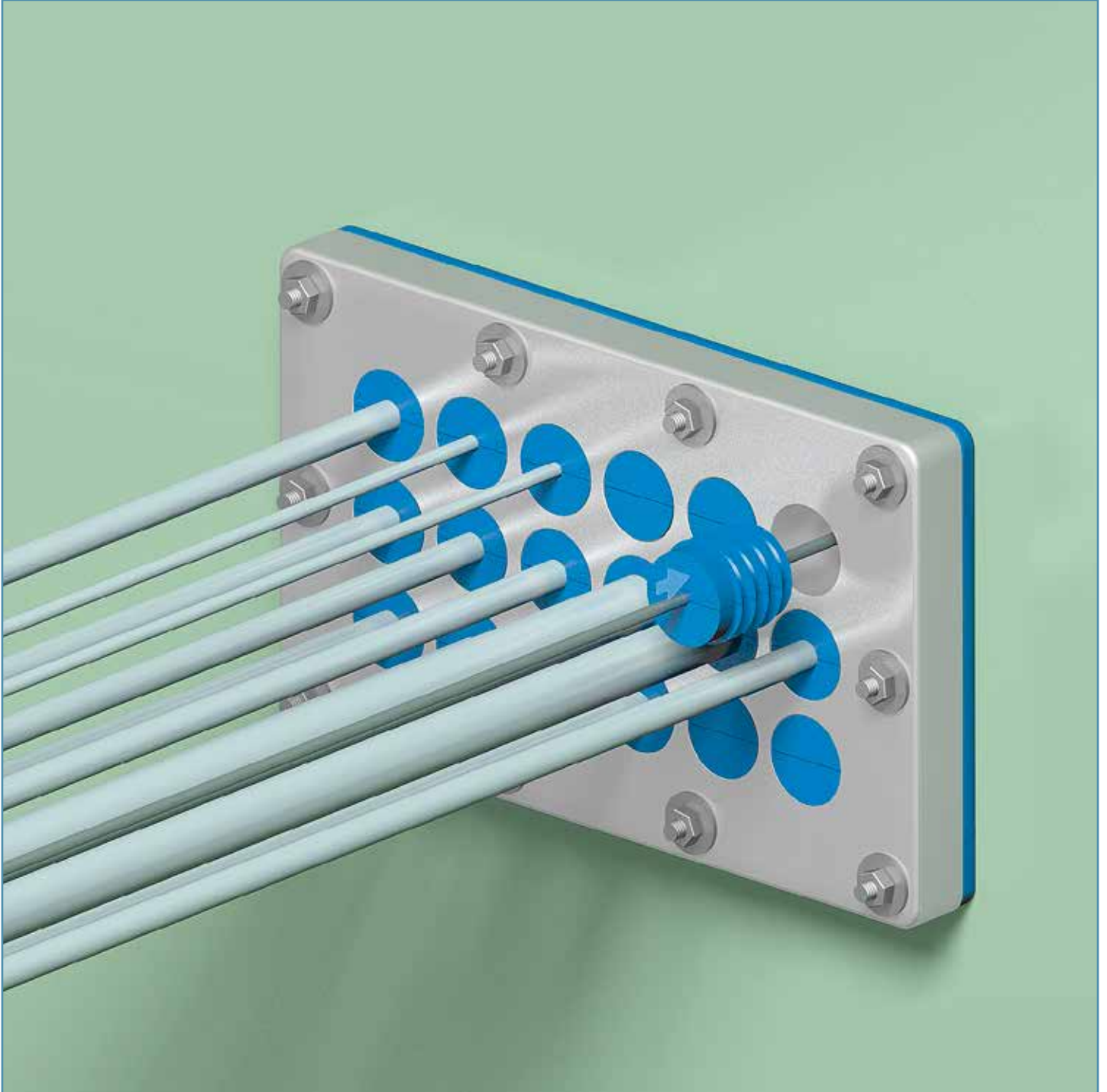
INSTALLATION INSTRUCTIONS CET-A-SIL® SEALING PLUGS IN GLANDMOD® MULTI-MODULES FOR CABLE GLAND SYSTEMS



The advantage of the individual ducting of the cables is that there is no need to disassemble the complete sealing system for adding or removing cables as can be the case by multi transit systems.

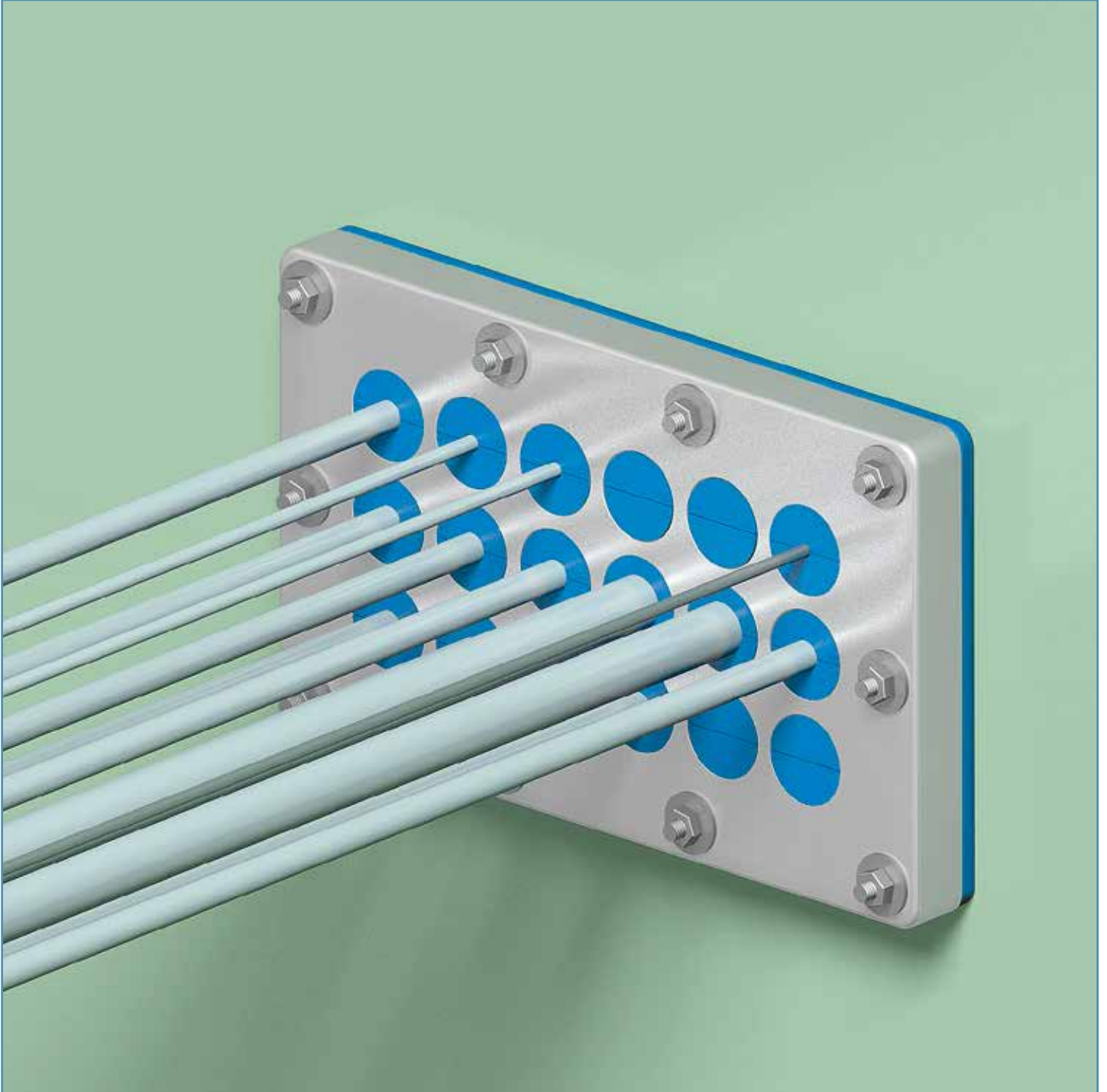
After removal of the blind plug the new cable is pulled through the conduit opening.

INSTALLATION INSTRUCTIONS CET-A-SIL® SEALING PLUGS IN GLANDMOD® MULTI-MODULES FOR CABLE GLAND SYSTEMS



A fitting CET-A-SIL® sealing plug is lubricated, placed around the cable and inserted in the conduit opening.

**INSTALLATION INSTRUCTIONS CET-A-SIL® SEALING PLUGS IN
GLANDMOD® MULTI-MODULES FOR CABLE GLAND SYSTEMS**



Finished GLANDMOD® multi-gland system.

STATE-OF-THE ART MULTI-CABLE TRANSIT SEALING SYSTEMS

The logo for RISE, featuring the word "RISE" in a stylized, bold, red font with a white outline and a slight 3D effect.The logo for RISE, featuring the word "RISE" in a stylized, bold, red font with a white outline and a slight 3D effect.The logo for CONDUCTION, featuring the word "CONDUCTION" in a red, outlined font with a double-line border.The logo for NOFIRNO, featuring the word "NOFIRNO" in a bold, orange font with a flame-like graphic above the letters "I" and "R".The logo for CONTROFIL, featuring the word "CONTROFIL" in a bold, blue font with a white outline, and "MULTI-CABLE TRANSITS" in a smaller, white font on a blue background below it.The logo for CET-A-SIL, featuring the words "CET-A-SIL" and "GLANDMOD" in a bold, blue font.

RISE®

- For fire, gas, smoke and watertight sealing of multi-cable penetrations.
- Compact system. No precise fitting parts.
- No metal parts, no corrosion.
- Most cost-effective way of installation.
- No pre-engineering or special conduit frames.
- No restrictions on cable types and sizes, no insulation in front of the penetration needed.
- Adding or removing cables an easy matter.
- RISE® EXTEND-A-FRAME for upgrading block systems - doubles the usable space!
- RISE® CONDUCTION® for EMC penetrations - high attenuation values - no galvanic corrosion - no aging.
- **Proven - for new and upgraded installations.**
- The system of choice in shipyards worldwide for more than 25 years!

NOFIRNO®

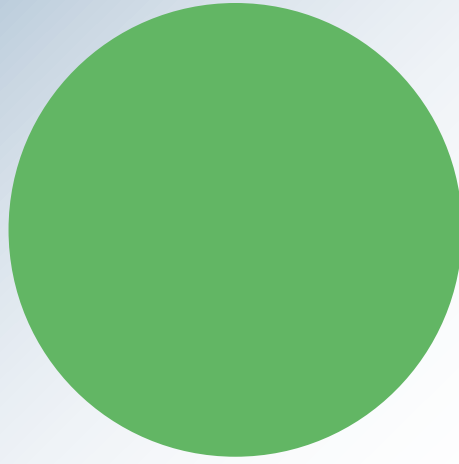
- System technology based on RISE®.
- Even easier installation.
- Even higher pressure ratings.
- Jet Fire tested for harshest applications.
- A-O and H-O up to A-60 and H-120.
- **Breakthrough - bundled cable sets approved.**
- The system of choice for highest fire ratings and harshest environment!

CONTROFIL®

- Newest technology for cable ducting and sealing.
- Newest rubber technology - CRUSHNOF® rubber.
- Shorter conduit depths - flexible composition.
- Prevents overfilling of cable transits.
- Fire tight - watertight.
- **Breakthrough - controlled filling of transits.**
- The system of choice for neat cable routing in installations.

CET-A-SIL®

- Multi-gland system for electrical cabinets.
- Modular system - sealing plugs and modules.
- Suitable for IP 68 rated equipment.
- Watertight up to 4 meter water column.
- No compression on cable sheathings.
- No metal parts - no corrosion - no O-rings.
- **Breakthrough - no disassembling to add cables.**
- The alternative system for cable glands.



WE CARE

**BEELE ENGINEERING:
A COMPANY DEDICATED
TO SAFETY
FOR OVER 45 YEARS**



BEELE Engineering bv
Beunkdijk 11 - 7122 NZ AALTEN - THE NETHERLANDS
Tel. +31 543 461629 - Fax +31 543 461786 - E-mail: info@beele.com
Websites: <https://www.beele.com>, sealingvalley.com and fissiccoating.com